

Service

Service

Service

DVP3550K/55  
DVP3550K/93  
DVP3556(X)/94  
DVP3520KX/78  
DVP3550KX/77  
DVP3550KMX/78  
DVP3550K/96  
DVP3556K/93



# Service Manual

## TABLE OF CONTENTS

	Page
. Technical Specifications.....	1-2
. Safety Instruction, Warning & Notes.....	1-3
. Mechanical and Dismantling Instructions.....	2-1
. Software Upgrades and Region Code Change.....	3-1
. Trouble Shooting Chart.....	4-1
. Wiring Diagram.....	5-1
. Electrical Diagrams and Print-layouts.....	6-1
. Set Mechanical Exploded view & Part list.....	7-1
. Revision List.....	8-1

©Copyright 2010 Philips Consumer Electronics B.V. Eindhoven, The Netherlands  
All rights reserved. No part of this publication may be reproduced, stored in a retrieval system or transmitted, in any form or by any means, electronic, mechanical, photocopying, or otherwise without the prior permission of Philips.

**CLASS 1  
LASER PRODUCT**

# 1. Technical Specifications, Directions for Use

## Index of this chapter:

[1.1 Technical Specifications](#)

[1.2 Directions for Use](#)

## Notes:

- Figures can deviate due to the different set executions.
- Specifications are indicative (subject to change).

## 1.1 Technical Specifications

For on-line product support please use the following website:

[http://www.p4c.philips.com/cgi-bin/dcbint/cpproduct\\_selector.pl](http://www.p4c.philips.com/cgi-bin/dcbint/cpproduct_selector.pl)

Here is product information available, as well as getting started, user manuals, frequently asked questions and software & drivers.

## 1.2 Directions for Use

You can download this information from the following websites:

<http://www.philips.com/support>

<http://www.p4c.philips.com>

## 2. Safety Instructions, Warnings, Notes, and Abbreviation List

### Index of this chapter:

[2.1 Safety Instructions](#)


[2.2 Warnings](#)

[2.3 Notes](#)

[2.4 Abbreviation List](#)

### 2.1 Safety Instructions

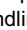
Safety regulations require the following **during** a repair:

- Connect the set to the Mains/AC Power via an isolation transformer (> 800 VA).
- Replace safety components, indicated by the symbol , only by components identical to the original ones. Any other component substitution (other than original type) may increase risk of fire or electrical shock hazard.

Safety regulations require that **after** a repair, the set must be returned in its original condition. Pay in particular attention to the following points:

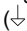
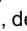
- Route the wire trees correctly and fix them with the mounted cable clamps.
- Check the insulation of the Mains/AC Power lead for external damage.
- Check the strain relief of the Mains/AC Power cord for proper function.
- Check the electrical DC resistance between the Mains/AC Power plug and the secondary side (only for sets that have a Mains/AC Power isolated power supply):
  1. Unplug the Mains/AC Power cord and connect a wire between the two pins of the Mains/AC Power plug.
  2. Set the Mains/AC Power switch to the "on" position (keep the Mains/AC Power cord unplugged!).
  3. Measure the resistance value between the pins of the Mains/AC Power plug and the metal shielding of the tuner or the aerial connection on the set. The reading should be between 4.5 MΩ and 12 MΩ.
  4. Switch "off" the set, and remove the wire between the two pins of the Mains/AC Power plug.
- Check the cabinet for defects, to prevent touching of any inner parts by the customer.




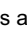
### 2.2 Warnings

- All ICs and many other semiconductors are susceptible to electrostatic discharges (ESD ) . Careless handling during repair can reduce life drastically. Make sure that, during repair, you are connected with the same potential as the mass of the set by a wristband with resistance. Keep components and tools also at this same potential.
- Be careful during measurements in the high voltage section.
- Never replace modules or other components while the unit is switched "on".
- When you align the set, use plastic rather than metal tools. This will prevent any short circuits and the danger of a circuit becoming unstable.

### 2.3 Notes

#### 2.3.1 General

- Measure the voltages and waveforms with regard to the chassis (= tuner) ground () , or hot ground () , depending on the tested area of circuitry. The voltages and waveforms shown in the diagrams are indicative. Measure them in the Service Default Mode (see chapter 5) with a colour bar signal and stereo sound (L: 3 kHz, R: 1 kHz unless stated otherwise) and picture carrier at 475.25 MHz for PAL, or 61.25 MHz for NTSC (channel 3).

- Where necessary, measure the waveforms and voltages with () and without () aerial signal. Measure the voltages in the power supply section both in normal operation () and in stand-by () . These values are indicated by means of the appropriate symbols.

#### 2.3.2 Schematic Notes

- All resistor values are in ohms, and the value multiplier is often used to indicate the decimal point location (e.g. 2K2 indicates 2.2 kΩ).
- Resistor values with no multiplier may be indicated with either an "E" or an "R" (e.g. 220E or 220R indicates 220 Ω).
- All capacitor values are given in micro-farads ( $\mu = \times 10^{-6}$ ), nano-farads ( $n = \times 10^{-9}$ ), or pico-farads ( $p = \times 10^{-12}$ ).
- Capacitor values may also use the value multiplier as the decimal point indication (e.g. 2p2 indicates 2.2 pF).
- An "asterisk" (\*) indicates component usage varies. Refer to the diversity tables for the correct values.
- The correct component values are listed in the Spare Parts List. Therefore, always check this list when there is any doubt.

#### 2.3.3 BGA (Ball Grid Array) ICs

##### Introduction

For more information on how to handle BGA devices, visit this URL: [www.atyourservice.ce.philips.com](http://www.atyourservice.ce.philips.com) (needs subscription, not available for all regions). After login, select "Magazine", then go to "Repair downloads". Here you will find Information on how to deal with BGA-ICs.

##### BGA Temperature Profiles

For BGA-ICs, you **must** use the correct temperature-profile, which is coupled to the 12NC. For an overview of these profiles, visit the website [www.atyourservice.ce.philips.com](http://www.atyourservice.ce.philips.com) (needs subscription, but is not available for all regions)

You will find this and more technical information within the "Magazine", chapter "Repair downloads".

For additional questions please contact your local repair help desk.

#### 2.3.4 Lead-free Soldering

Due to lead-free technology some rules have to be respected by the workshop during a repair:

- Use only lead-free soldering tin Philips SAC305 with order code 0622 149 00106. If lead-free solder paste is required, please contact the manufacturer of your soldering equipment. In general, use of solder paste within workshops should be avoided because paste is not easy to store and to handle.
- Use only adequate solder tools applicable for lead-free soldering tin. The solder tool must be able:
  - To reach a solder-tip temperature of at least 400°C.
  - To stabilize the adjusted temperature at the solder-tip.
  - To exchange solder-tips for different applications.
- Adjust your solder tool so that a temperature of around 360°C - 380°C is reached and stabilized at the solder joint. Heating time of the solder-joint should not exceed ~ 4 sec. Avoid temperatures above 400°C, otherwise wear-out of tips will increase drastically and flux-fluid will be destroyed. To avoid wear-out of tips, switch "off" unused equipment or reduce heat.
- Mix of lead-free soldering tin/parts with leaded soldering tin/parts is possible but PHILIPS recommends strongly to **avoid** mixed regimes. If this cannot be avoided, carefully clear the solder-joint from old tin and re-solder with new tin.

## Safety Instructions, Warnings, Notes, and Abbreviation List

### 2.3.5 Alternative BOM identification

It should be noted that on the European Service website, "Alternative BOM" is referred to as "Design variant".

The **third digit** in the serial number (example: KX2B0835000001) indicates the number of the alternative B.O.M. (Bill Of Materials) that has been used for producing the specific AV set. In general, it is possible that the same AV model on the market is produced with e.g. two different types of display, coming from two different suppliers. This will then result in sets which have the same CTN (Commercial Type Number; e.g. MCM394/12) but which have a different B.O.M. number.

Also, it is possible that same model on the market is produced with two production centers, however their partslist is the same. In such case, no alternative B.O.M. will be created.

By looking at the third digit of the serial number, one can identify which B.O.M. is used for the set he is working with. If the third digit of the serial number contains the number "1" (example: KX1B033500001), then the set has been manufactured according to B.O.M. number 1. If the third digit is a "2" (example: KX2B033500001), then the set has been produced according to B.O.M. no. 2. This is important for ordering the correct spare parts!  
For the third digit, the numbers 1...9 and the characters A...Z can be used, so in total: 9 plus 26= 35 different B.O.M.s can be indicated by the third digit of the serial number.

**Identification:** The bottom line of a type plate gives a 14-digit serial number. Digits 1 and 2 refer to the production centre (e.g. LM is Arts), digit 3 refers to the B.O.M. code, digit 4 refers to the Service version change code, digits 5 and 6 refer to the production year, and digits 7 and 8 refer to production week (in example below it is 2008 week 50). The 6 last digits contain the serial number.

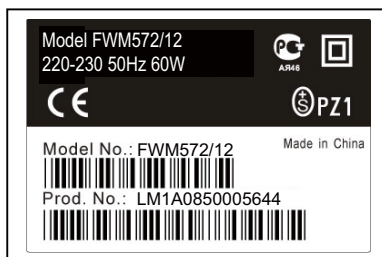


Figure 2-1 Serial number (example)

### 2.3.6 Module Level Repair (MLR) or Component Level Repair (CLR)

If a board is defective, consult your repair procedure to decide if the board has to be exchanged or if it should be repaired on component level.

If your repair procedure says the board should be exchanged completely, do not solder on the defective board. Otherwise, it cannot be returned to the O.E.M. supplier for back charging!

### 2.3.7 Practical Service Precautions

- **It makes sense to avoid exposure to electrical shock.** While some sources are expected to have a possible dangerous impact, others of quite high potential are of limited current and are sometimes held in less regard.
- **Always respect voltages.** While some may not be dangerous in themselves, they can cause unexpected reactions that are best avoided. Before reaching into a powered TV set, it is best to test the high voltage insulation. It is easy to do, and is a good service precaution.

## 2.4 Abbreviation List

0/6/12	SCART switch control signal on A/V board. 0 = loop through (AUX to TV), 6 = play 16 : 9 format, 12 = play 4 : 3 format
2DNR	Spatial (2D) Noise Reduction
3DNR	Temporal (3D) Noise Reduction
AARA	Automatic Aspect Ratio Adaptation: algorithm that adapts aspect ratio to remove horizontal black bars; keeps the original aspect ratio
ACI	Automatic Channel Installation: algorithm that installs TV channels directly from a cable network by means of a predefined TXT page
ADC	Analogue to Digital Converter
AFC	Automatic Frequency Control: control signal used to tune to the correct frequency
AGC	Automatic Gain Control: algorithm that controls the video input of the feature box
AM	Amplitude Modulation
ANR	Automatic Noise Reduction: one of the algorithms of Auto TV
AP	Asia Pacific
AR	Aspect Ratio: 4 by 3 or 16 by 9
ASF	Auto Screen Fit: algorithm that adapts aspect ratio to remove horizontal black bars without discarding video information
ATSC	Advanced Television Systems Committee, the digital TV standard in the USA
ATV	See Auto TV
Auto TV	A hardware and software control system that measures picture content, and adapts image parameters in a dynamic way
AV	External Audio Video
AVC	Audio Video Controller
AVIP	Audio Video Input Processor
B/G	Monochrome TV system. Sound carrier distance is 5.5 MHz
BLR	Board-Level Repair
BTSC	Broadcast Television Standard Committee. Multiplex FM stereo sound system, originating from the USA and used e.g. in LATAM and AP-NTSC countries
B-TXT	Blue Teletext
C	Centre channel (audio)
CEC	Consumer Electronics Control bus: remote control bus on HDMI connections
CL	Constant Level: audio output to connect with an external amplifier
CLR	Component Level Repair
COLUMBUS	COLOR LUMinance Baseband Universal Sub-system
ComPair	Computer aided rePair
CP	Connected Planet / Copy Protection
CSM	Customer Service Mode
CTI	Color Transient Improvement: manipulates steepness of chroma transients
CVBS	Composite Video Blanking and Synchronization
DAC	Digital to Analogue Converter
DBE	Dynamic Bass Enhancement: extra low frequency amplification
DDC	See "E-DDC"

## Safety Instructions, Warnings, Notes, and Abbreviation List

D/K	Monochrome TV system. Sound carrier distance is 6.5 MHz		lines. The fields are written in "pairs", causing line flicker.
DFI	Dynamic Frame Insertion	IR	Infra Red
DFU	Directions For Use: owner's manual	IRQ	Interrupt Request
DMR	Digital Media Reader: card reader	ITU-656	The ITU Radio communication Sector (ITU-R) is a standards body subcommittee of the International Telecommunication Union relating to radio communication. ITU-656 (a.k.a. SDI), is a digitized video format used for broadcast grade video.
DMSD	Digital Multi Standard Decoding		Uncompressed digital component or digital composite signals can be used. The SDI signal is self-synchronizing, uses 8 bit or 10 bit data words, and has a maximum data rate of 270 Mbit/s, with a minimum bandwidth of 135 MHz.
DNM	Digital Natural Motion		
DNR	Digital Noise Reduction: noise reduction feature of the set		
DRAM	Dynamic RAM		
DRM	Digital Rights Management		
DSP	Digital Signal Processing		
DST	Dealer Service Tool: special remote control designed for service technicians		
DTCP	Digital Transmission Content Protection; A protocol for protecting digital audio/video content that is traversing a high speed serial bus, such as IEEE-1394	ITV	Institutional TeleVision; TV sets for hotels, hospitals etc.
DVB-C	Digital Video Broadcast - Cable	JOP	Jaguar Output Processor
DVB-T	Digital Video Broadcast - Terrestrial	LS	Last Status; The settings last chosen by the customer and read and stored in RAM or in the NVM. They are called at start-up of the set to configure it according to the customer's preferences
DVD	Digital Versatile Disc		Latin America
DVI(-d)	Digital Visual Interface (d= digital only)		Liquid Crystal Display
E-DDC	Enhanced Display Data Channel (VESA standard for communication channel and display). Using E-DDC, the video source can read the EDID information from the display.	LCD	
EDID	Extended Display Identification Data (VESA standard)	LED	Light Emitting Diode
EEPROM	Electrically Erasable and Programmable Read Only Memory	L/L'	Monochrome TV system. Sound carrier distance is 6.5 MHz. L' is Band I, L is all bands except for Band I
EMI	Electro Magnetic Interference	LORE	Local Regression approximation
EPLD	Erasable Programmable Logic Device		noise reduction
EU	Europe	LPL	LG.Philips LCD (supplier)
EXT	EXternal (source), entering the set by SCART or by cinches (jacks)	LS	Loudspeaker
FBL	Fast BLanking: DC signal accompanying RGB signals	LVDS	Low Voltage Differential Signalling
FDS	Full Dual Screen (same as FDW)	Mbps	Mega bits per second
FDW	Full Dual Window (same as FDS)	M/N	Monochrome TV system. Sound carrier distance is 4.5 MHz
FLASH	FLASH memory	MIPS	Microprocessor without Interlocked Pipeline-Stages; A RISC-based microprocessor
FM	Field Memory or Frequency Modulation		Matrix Output Processor
FPGA	Field-Programmable Gate Array	MOP	
FTV	Flat TeleVision	MOSFET	Metal Oxide Silicon Field Effect Transistor, switching device
Gb/s	Giga bits per second		Motion Pictures Experts Group
G-TXT	Green TeleteXT	MPEG	
H	H_sync to the module	MPIF	Multi Platform InterFace
HD	High Definition	MUTE	MUTE Line
HDD	Hard Disk Drive	NC	Not Connected
HDCP	High-bandwidth Digital Content Protection: A "key" encoded into the HDMI/DVI signal that prevents video data piracy. If a source is HDCP coded and connected via HDMI/DVI without the proper HDCP decoding, the picture is put into a "snow vision" mode or changed to a low resolution. For normal content distribution the source and the display device must be enabled for HDCP "software key" decoding.	NICAM	Near Instantaneous Compounded Audio Multiplexing. This is a digital sound system, mainly used in Europe.
		NTC	Negative Temperature Coefficient, non-linear resistor
		NTSC	National Television Standard Committee. Color system mainly used in North America and Japan. Color carrier NTSC M/N= 3.579545 MHz, NTSC 4.43= 4.433619 MHz (this is a VCR norm, it is not transmitted off-air)
		NVM	Non-Volatile Memory: IC containing TV related data such as alignments
HDMI	High Definition Multimedia Interface	O/C	Open Circuit
HP	HeadPhone	OSD	On Screen Display
I	Monochrome TV system. Sound carrier distance is 6.0 MHz	OTC	On screen display Teletext and Control; also called Artistic (SAA5800)
I <sup>2</sup> C	Inter IC bus	P50	Project 50: communication protocol between TV and peripherals
I <sup>2</sup> D	Inter IC Data bus		Phase Alternating Line. Color system mainly used in West Europe (color carrier= 4.433619 MHz) and South America (color carrier PAL M=
I <sup>2</sup> S	Inter IC Sound bus	PAL	
IF	Intermediate Frequency		
Interlaced	Scan mode where two fields are used to form one frame. Each field contains half the number of the total amount of		

## Safety Instructions, Warnings, Notes, and Abbreviation List

	3.575612 MHz and PAL N= 3.582056 MHz)	V	V-sync to the module
PCB	Printed Circuit Board (same as "PWB")	VCR	Video Cassette Recorder
PCM	Pulse Code Modulation	VESA	Video Electronics Standards Association
PDP	Plasma Display Panel	VGA	640x480 (4:3)
PFC	Power Factor Corrector (or Pre-conditioner)	VL	Variable Level out: processed audio output toward external amplifier
PIP	Picture In Picture	VSB	Vestigial Side Band; modulation method
PLL	Phase Locked Loop. Used for e.g. FST tuning systems. The customer can give directly the desired frequency	WYSIWYR	What You See Is What You Record: record selection that follows main picture and sound
POR	Power On Reset, signal to reset the uP	WXGA	1280x768 (15:9)
Progressive Scan	Scan mode where all scan lines are displayed in one frame at the same time, creating a double vertical resolution.	XTAL	Quartz crystal
PTC	Positive Temperature Coefficient, non-linear resistor	XGA	1024x768 (4:3)
PWB	Printed Wiring Board (same as "PCB")	Y	Luminance signal
PWM	Pulse Width Modulation	Y/C	Luminance (Y) and Chrominance (C) signal
QRC	Quasi Resonant Converter	YPbPr	Component video. Luminance and scaled color difference signals (B-Y and R-Y)
QTNR	Quality Temporal Noise Reduction	YUV	Component video
QVCP	Quality Video Composition Processor		
RAM	Random Access Memory		
RGB	Red, Green, and Blue. The primary color signals for TV. By mixing levels of R, G, and B, all colors (Y/C) are reproduced.		
RC	Remote Control		
RC5 / RC6	Signal protocol from the remote control receiver		
RESET	RESET signal		
ROM	Read Only Memory		
R-TXT	Red TeleteXT		
SAM	Service Alignment Mode		
S/C	Short Circuit		
SCART	Syndicat des Constructeurs d'Appareils Radiorécepteurs et Téléviseurs		
SCL	Serial Clock I <sup>2</sup> C		
SCL-F	CLock Signal on Fast I <sup>2</sup> C bus		
SD	Standard Definition		
SDA	Serial Data I <sup>2</sup> C		
SDA-F	DAta Signal on Fast I <sup>2</sup> C bus		
SDI	Serial Digital Interface, see "ITU-656"		
SDRAM	Synchronous DRAM		
SECAM	SEquence Couleur Avec Mémoire. Color system mainly used in France and East Europe. Color carriers= 4.406250 MHz and 4.250000 MHz		
SIF	Sound Intermediate Frequency		
SMPS	Switched Mode Power Supply		
SoC	System on Chip		
SOG	Sync On Green		
SOPS	Self Oscillating Power Supply		
S/PDIF	Sony Philips Digital InterFace		
SRAM	Static RAM		
SRP	Service Reference Protocol		
SSB	Small Signal Board		
STBY	STand-BY		
SVGA	800x600 (4:3)		
SVHS	Super Video Home System		
SW	Software		
SWAN	Spatial temporal Weighted Averaging Noise reduction		
SXGA	1280x1024		
TFT	Thin Film Transistor		
THD	Total Harmonic Distortion		
TMDs	Transmission Minimized Differential Signalling		
TXT	TeleteXT		
TXT-DW	Dual Window with TeleteXT		
UI	User Interface		
uP	Microprocessor		
UXGA	1600x1200 (4:3)		



## Mechanical and Dismantling Instructions

### Dismantling Instruction

Detailed information please refer to the model set.

The following guidelines show how to dismantle the player.

**Step1:** Remove 5 screws around the Top Cover, and then remove the Top Cover (Figure 1).

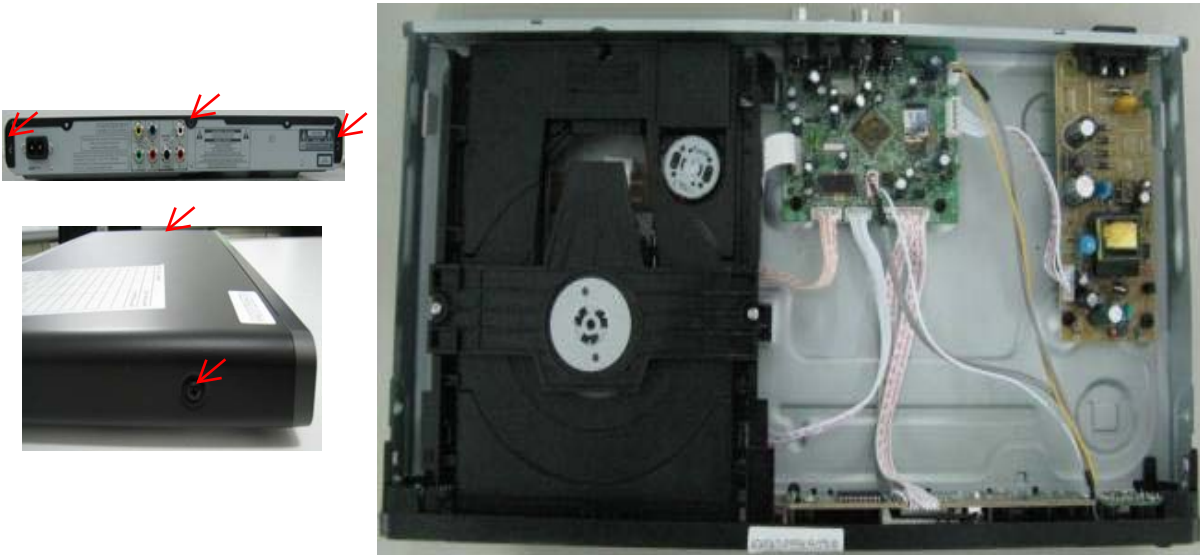


Figure 1

**Step2:** If it is necessary to dismantle Loader or Front Panel, the Front door should be removed first. (Figure 2)

Note: Make sure to operate gently otherwise the guider would be damaged.



Please kindly note that dismantle the front door assembly carefully to avoid damage tray and the front door.

Figure 2

## Mechanical and Dismantling Instructions

### Dismantling Instruction

Detailed information please refer to the model set.

**Step3:** If the tray can't open in normal way, you can make it through the instruction as below (Figure 3).

Note: Make sure to operate gently otherwise the guider would be damaged.



Figure 3

**Step4:** Dismantling Front Panel, disconnect the connectors (XP80, XP7, XP476), need release 3 snaps of Front Panel & 2 snaps of bottom cabinet , then gently pull the Panel out from the set. (Figure 4 - Figure 6)

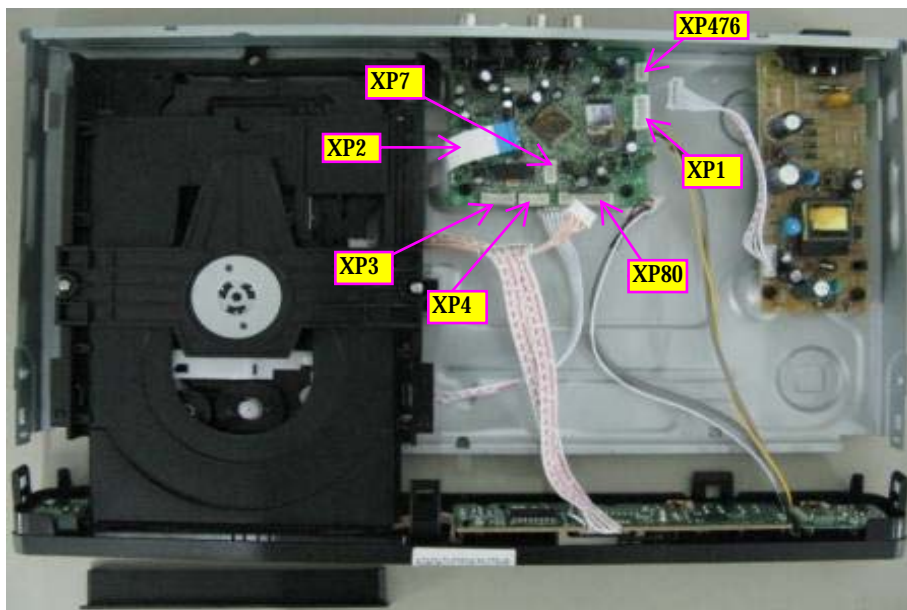


Figure 4



## Mechanical and Dismantling Instructions

### Dismantling Instruction

Detailed information please refer to the model set.

**Step5:** Dismantling Loader, disconnect the 3 connectors (XP2, XP3, XP4) aiming in the below figure, and remove 1 screw that connects the loader and the bottom cabinet. (Figure 5)

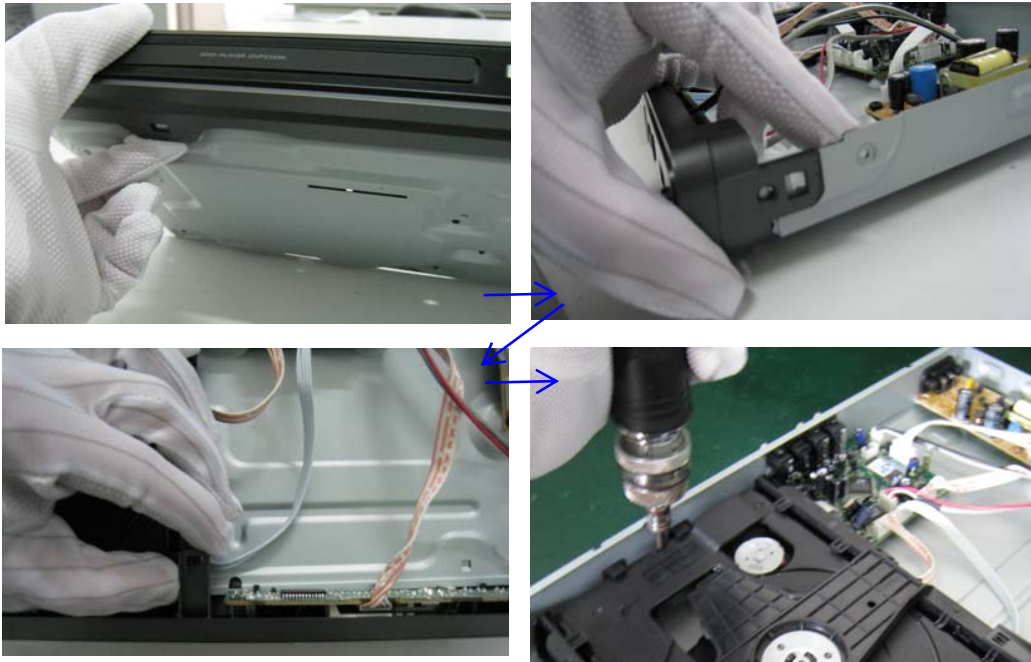


Figure 5

**Step6:** Dismantling Main Board, first disconnect the connector (XP1), and then remove 4 screws. (Figure 6)

**Step7:** Remove the 4 screws on Power Board to dismantle the Power Board. (2 screws for /93. Figure 6)

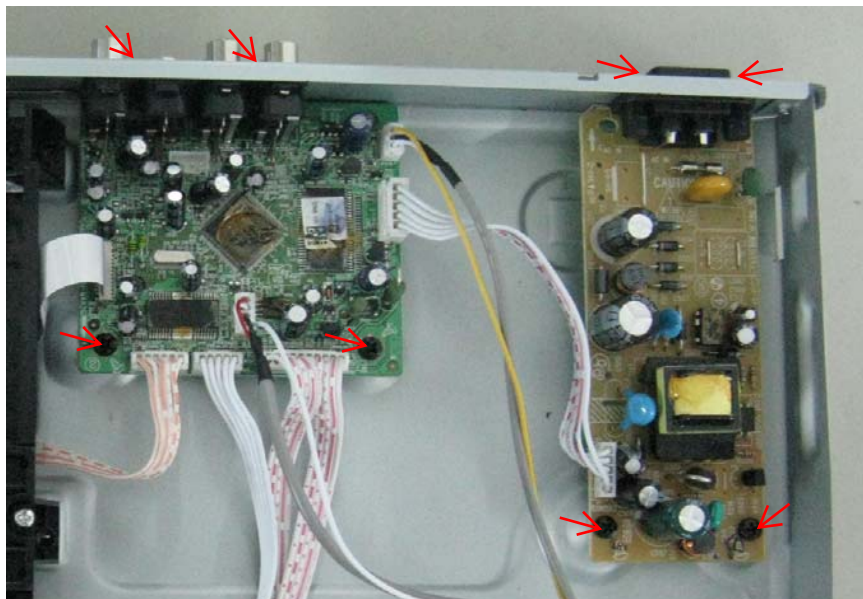


Figure 6

## Software upgrade and region code change

### Preparation to upgrade software

- 1) Power on the set and open the tray, then press "5""5" on remote control to check the SW File Name.
- 2) Start the CD Burning software and create a new CD project (Data Disc) with the following setting:  
Label: DVP3XXX(K) (No need the label name)  
SW File Name: DVPXXXX(K)\_XX.bin  
Note: It is required to keep the SW file name accord.
- 3) Burn the data onto a blank CDR

#### A. Procedure for software upgrade:

- A) Upgrade software via CDR:
  - 1) Power on the set and insert the prepared Upgrade CDR.
  - 2) The set will starts reading disc & response with the following display TV screen:  
Upgrade file detected  
Upgrade ?  
Press PLAY to start
  - 3) Press "PLAY" button to confirm, then screen will display:  

Upgrade file detected	Upgrade file detected
Do not power off	Do not power off
File Copying	→ Upgrading
  - 4) The upgraded tray will automatically open when file copying completed, then take out the disc.
  - 5) About 1 minute later, the trace will automatically close when upgrading completed.
- B) Upgrade software via USB Flash Drive:
  - 1) Create the correct software file onto the USB flash drive.
  - 2) Power on the set and keep no disc, then insert it to the USB jack of the front panel.
  - 3) When the DVD player switchs to the USB state automatically, pls follow the instructions on the TV screen to confrim the upgrade operation.

#### B. Read out the software versions to confirm upgrading

- 1) Power on the set and press "Setup" button on the remote control.
- 2) Press "1""3""7""9" button or press down cursor on remote control to select "Preferences" and press right & down cursor to select "Version Info".

The software version and other informations will be displayed on the TV screen as follows:

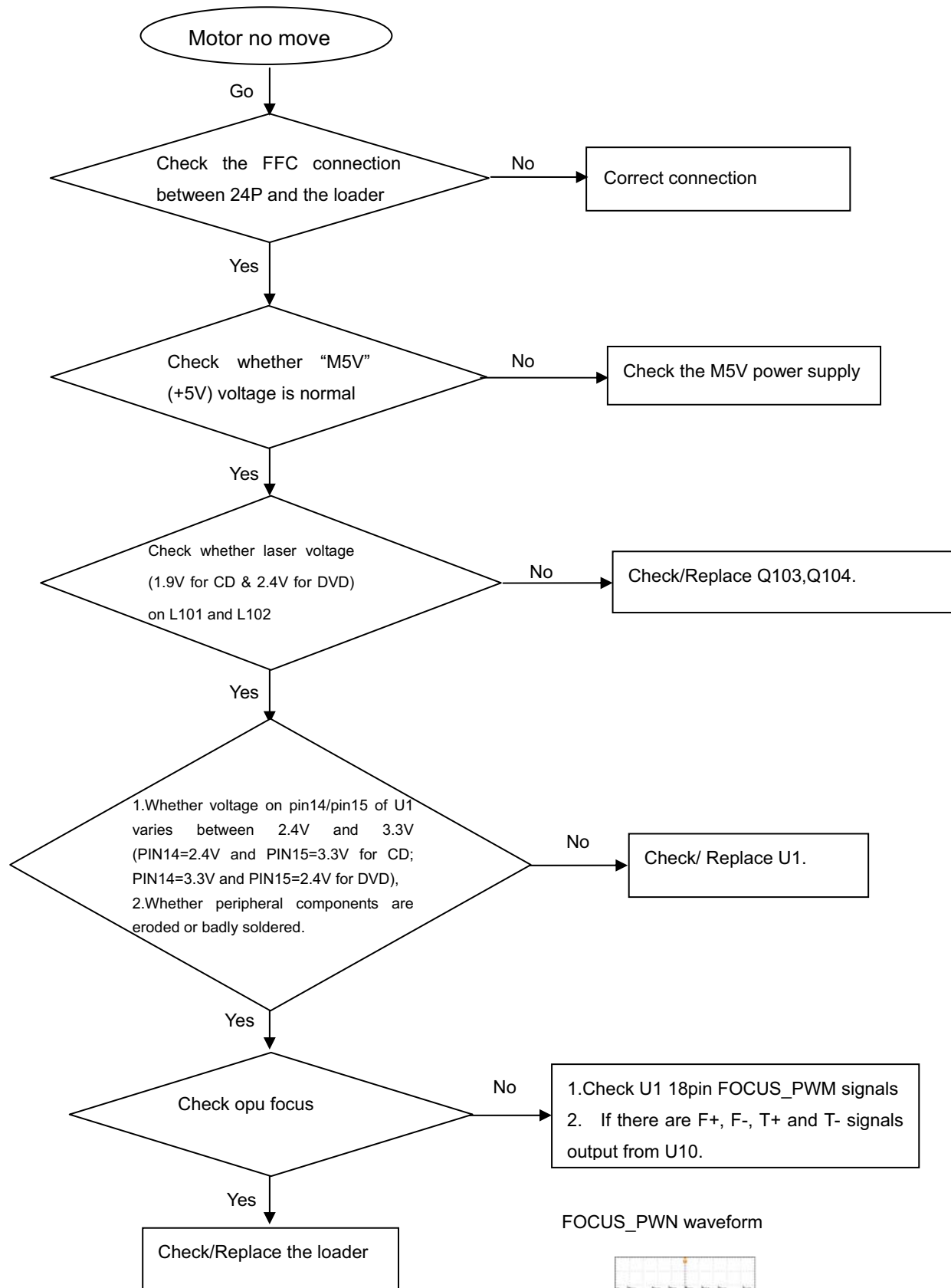
Version	XX.XX.XX.XX (Main version)
Sub-Ver	XX.XX.XX.XX (version of applicaton software)
8032	XX.XX.XX.XX
Servo	XX.XX.XX.XX (software version of Servo)
RISC	XX.XX.XX.XX
DSP	XX.XX.XX.XX
Region Code	X

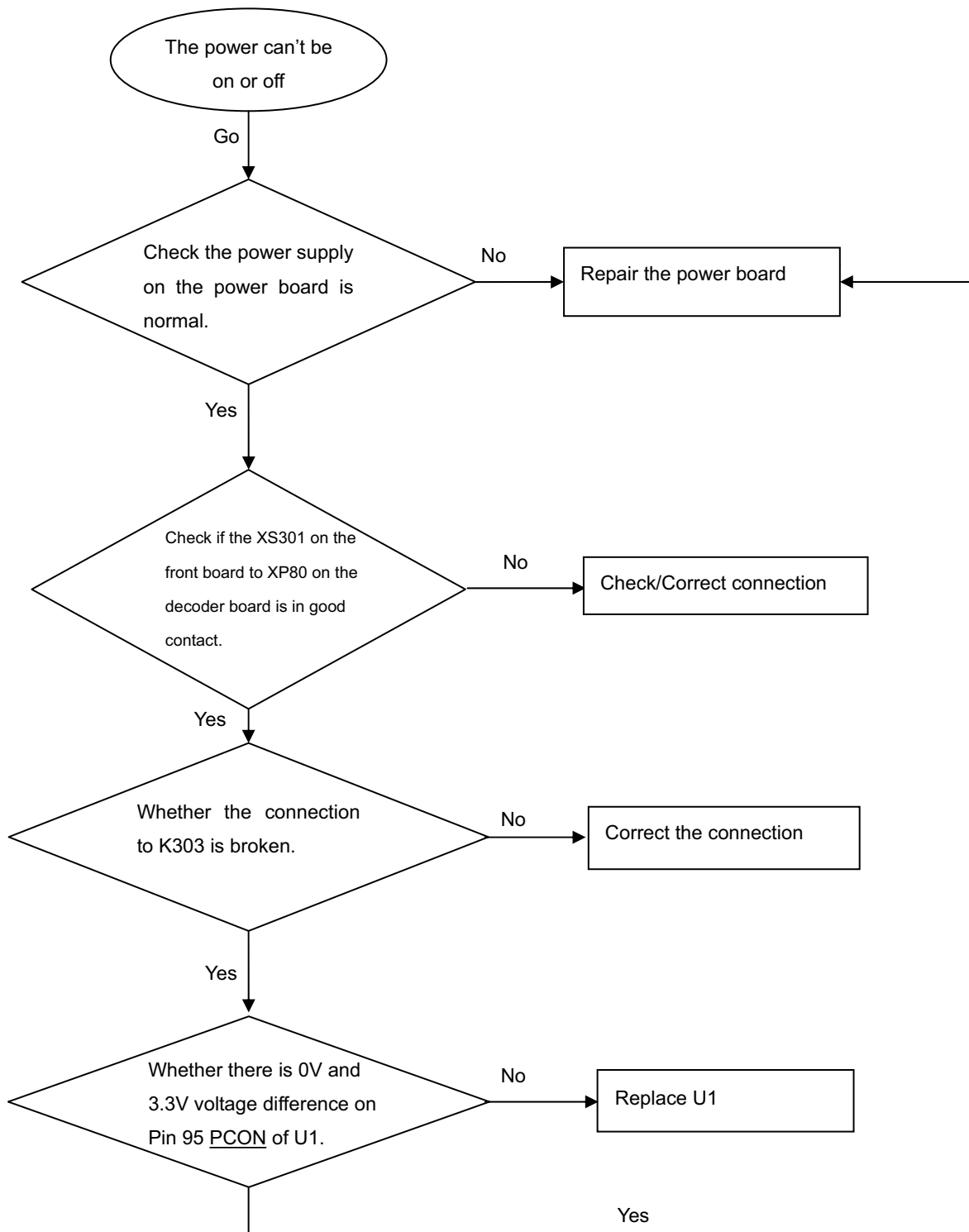
**Caution:** The set must not be power off during upgrading, Otherwise the Main board will be damaged entirely.

## Region Code Change

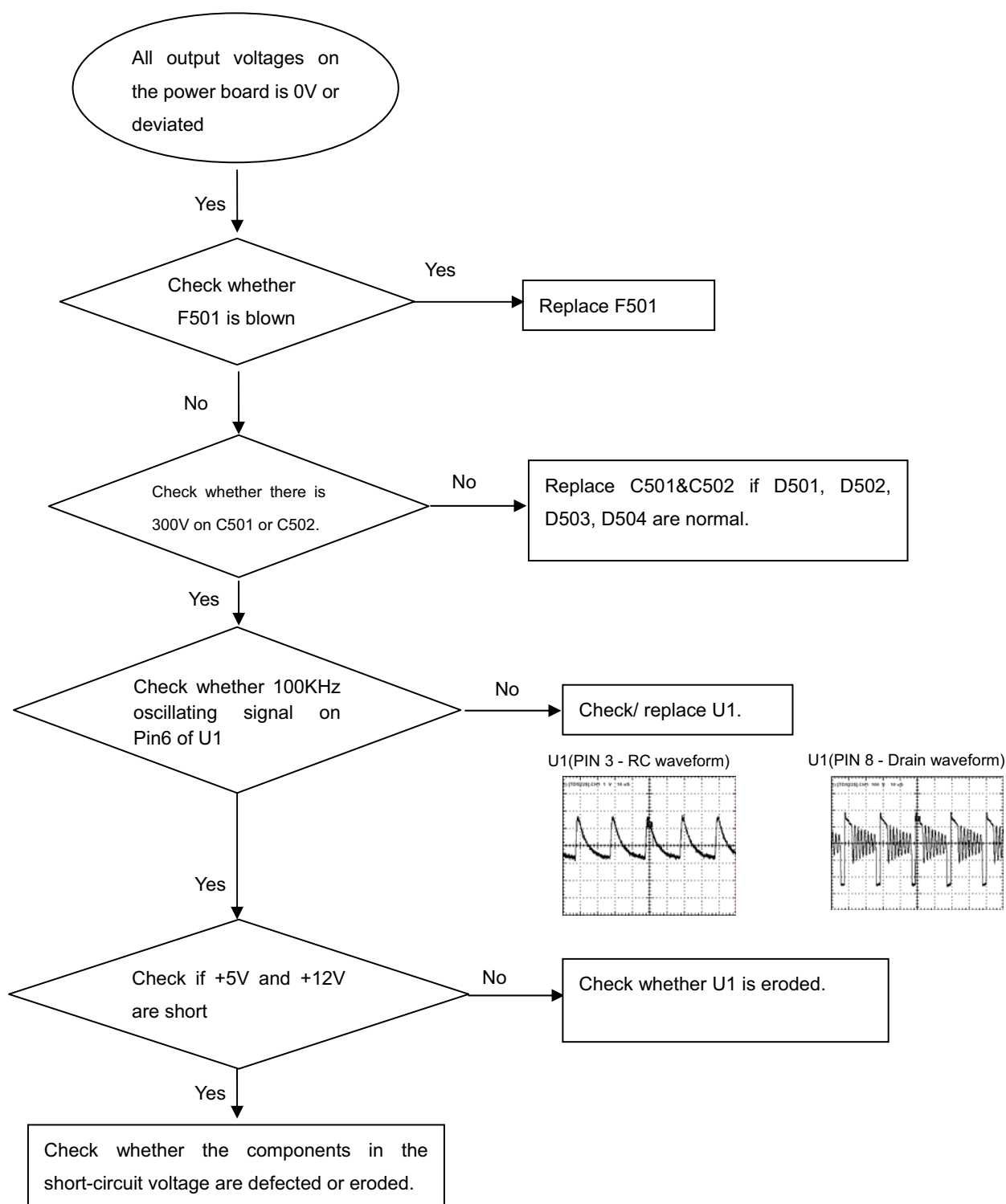
- 1) Power on the set and open the tray door;
- 2) Press the "Setup" button on the remote control, then the setup interface will be displayed on the TV screen;
- 3) Move the down cursor on remote control to select "Preferences" and press "1""3""8""9""3""1" on the remote control;
- 4) Then move the up or down cursor to select the region code.

Note: Restart after above steps.

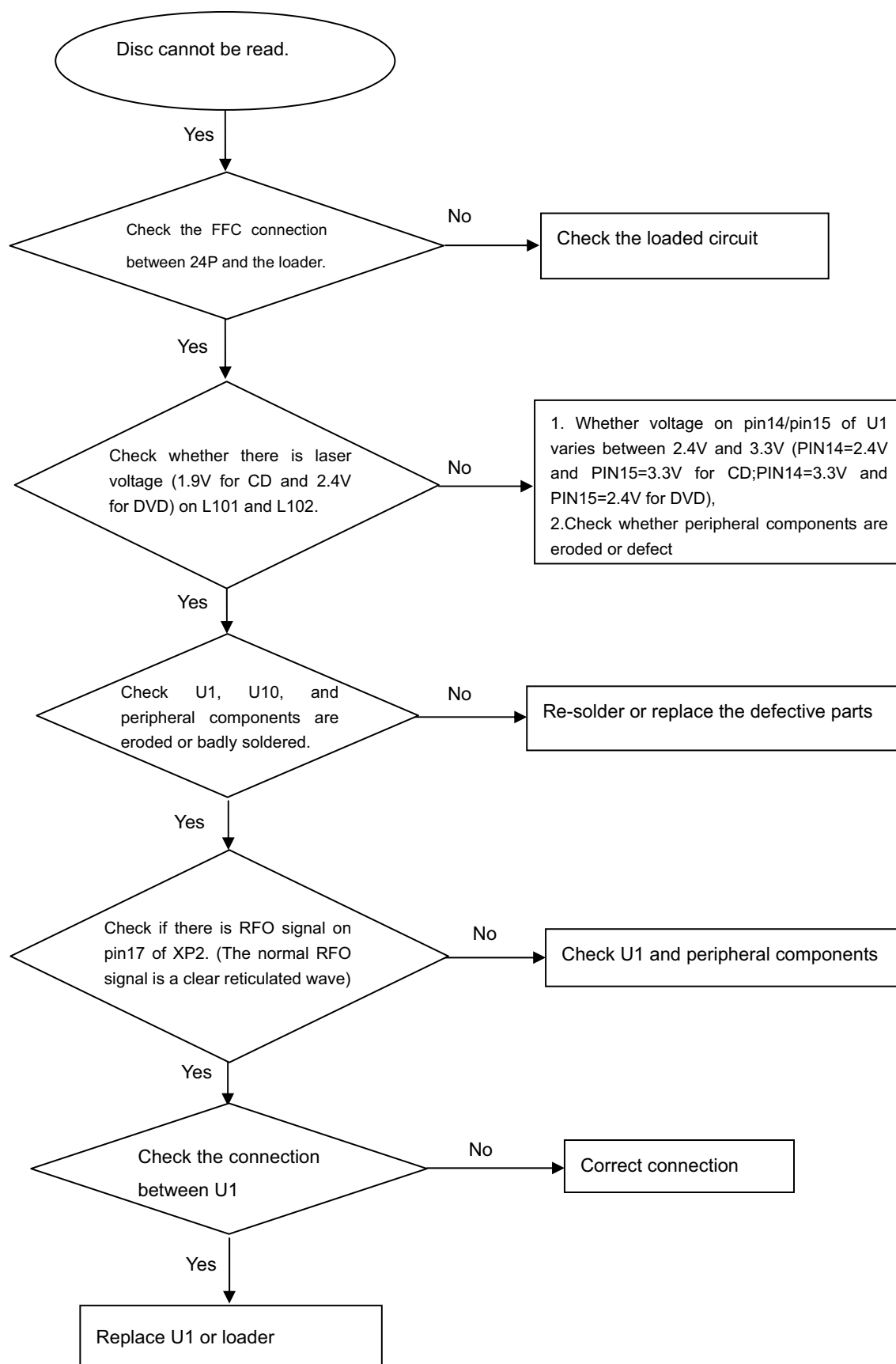
**Spindle motor does not move**

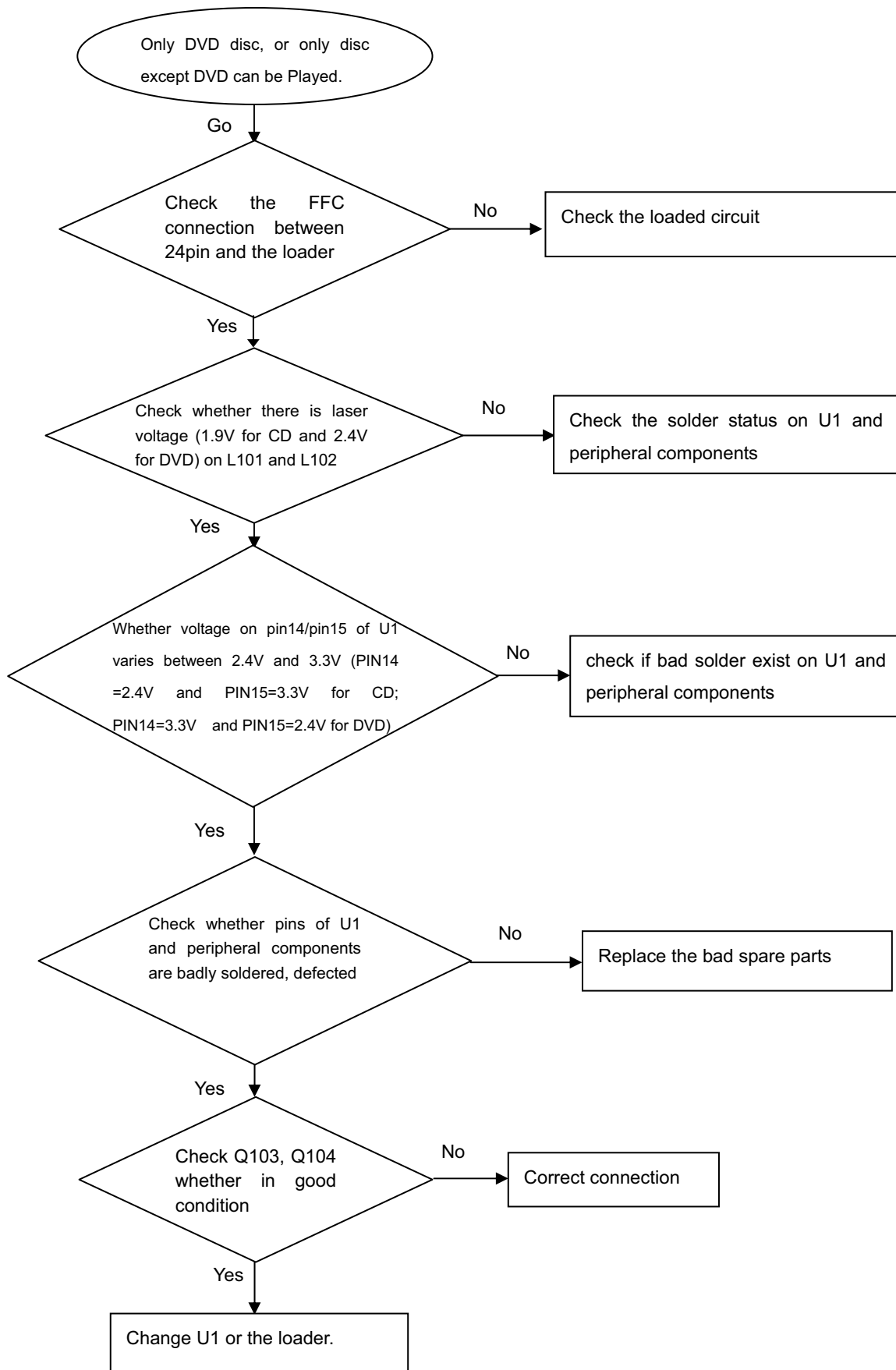
**The power can not be on or off**

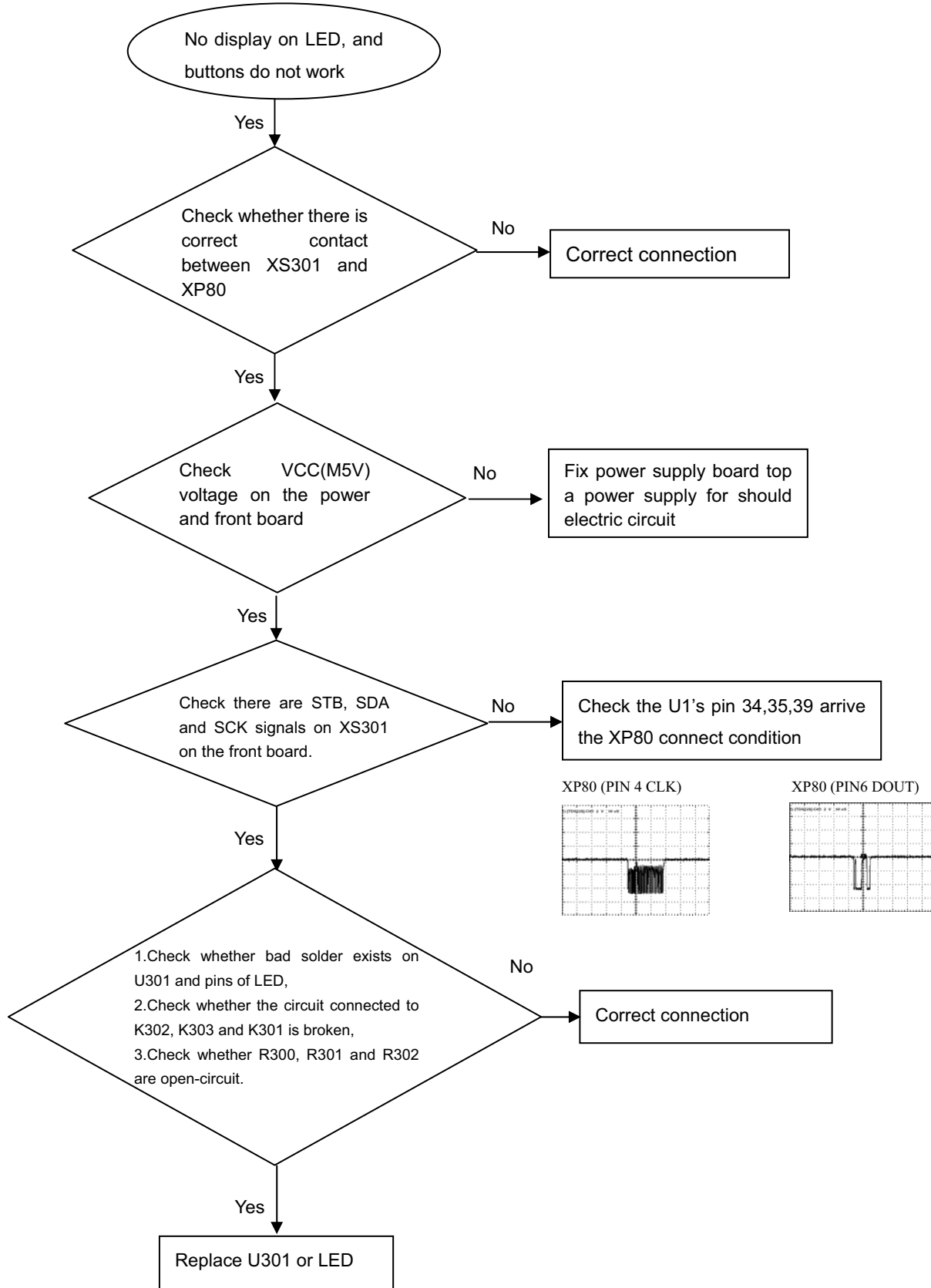
**All output voltages on the power board is 0V or deviated.**

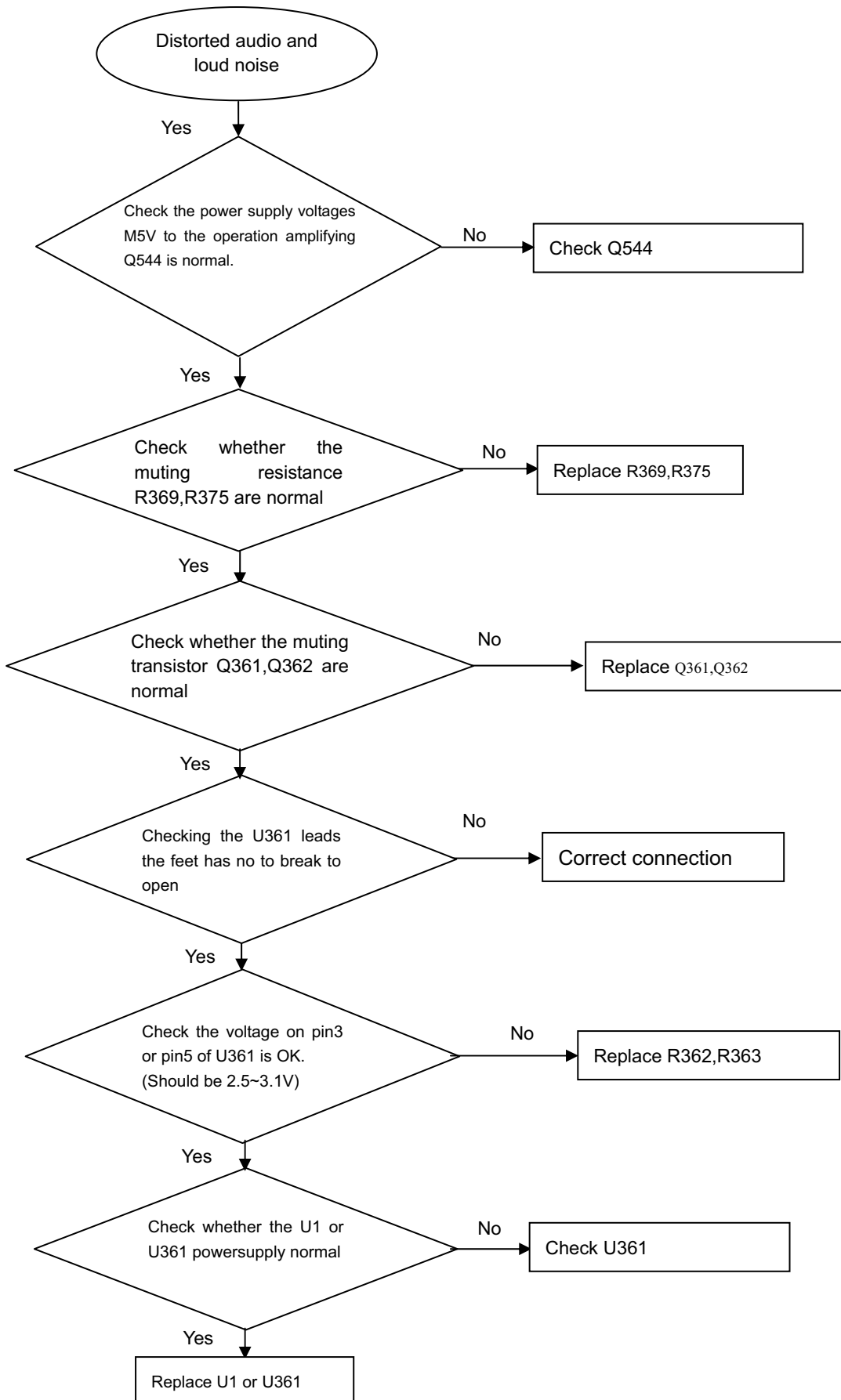


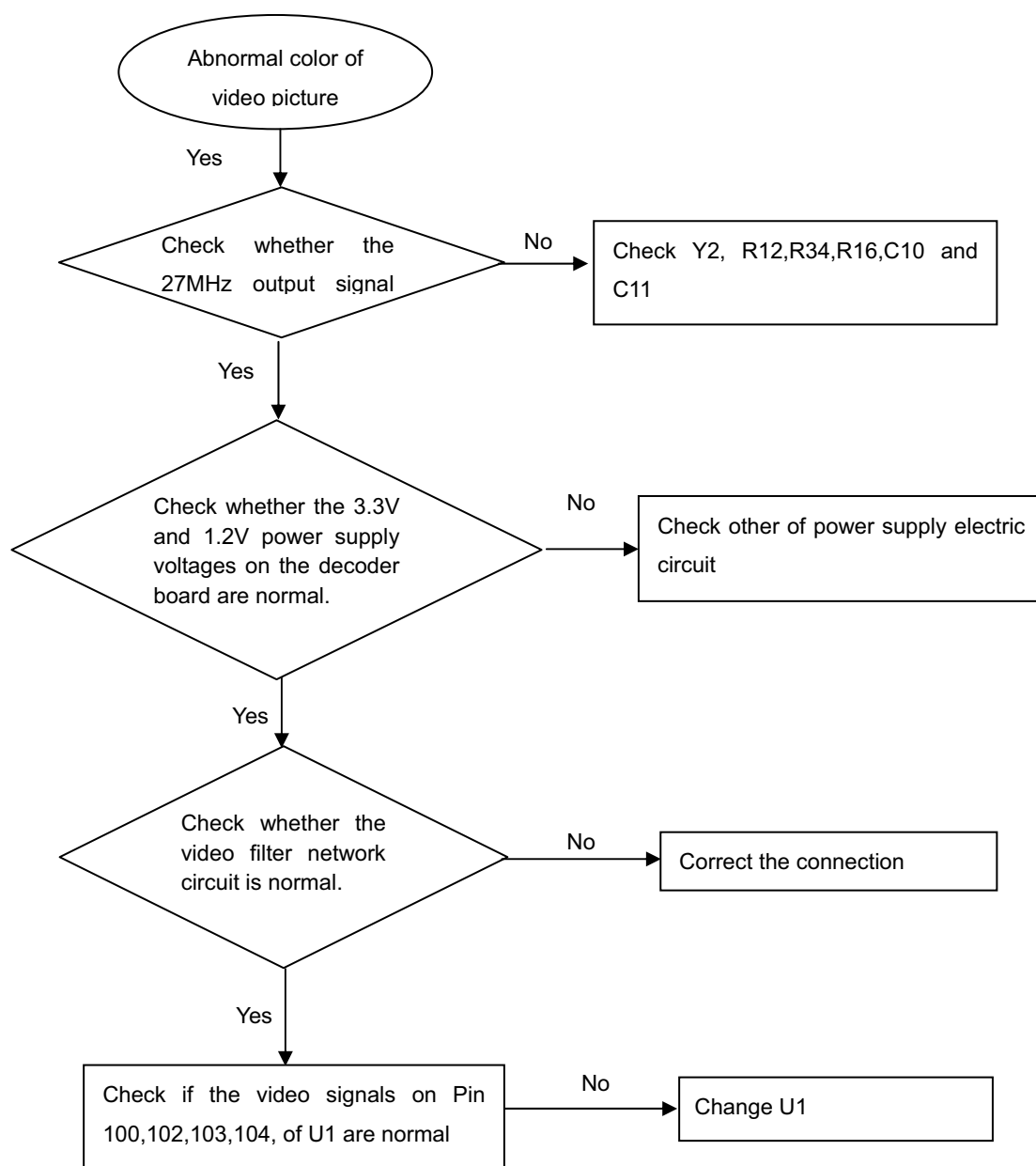


**Disc cannot be read.**

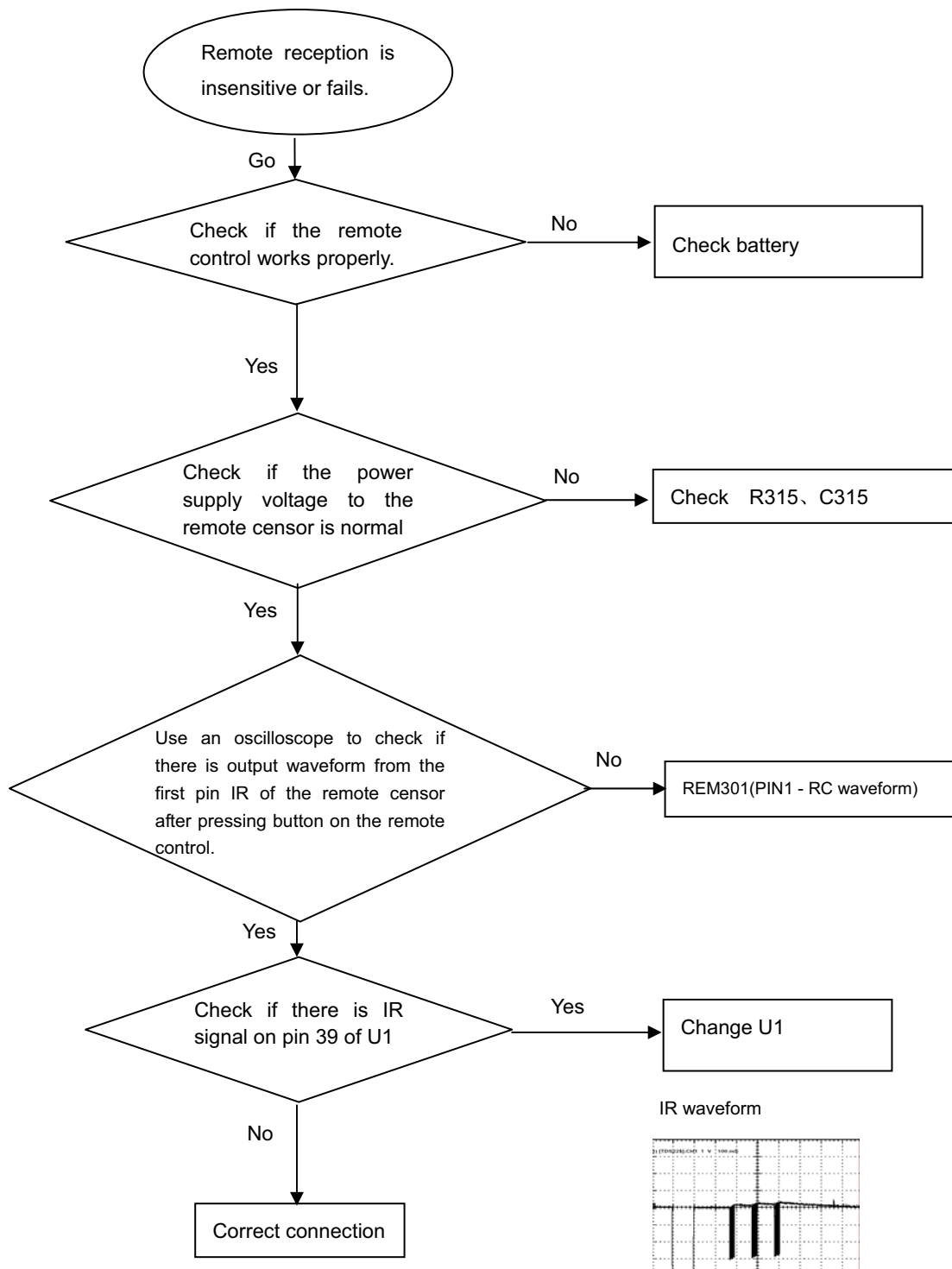
**Only DVD disc or only disc except DVD can be played**

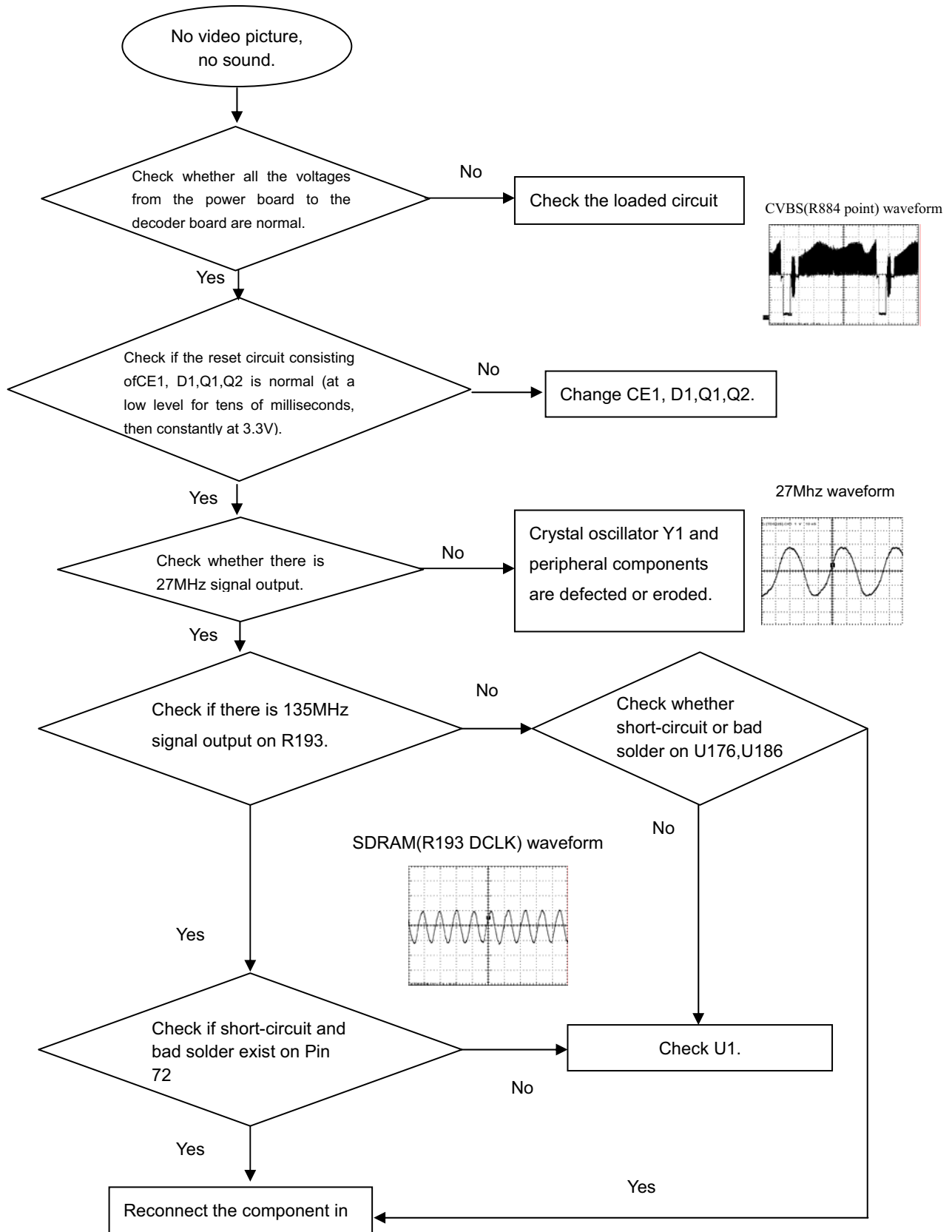
**No display on LED, and buttons do not work**

**Distorted audio and loud noise**

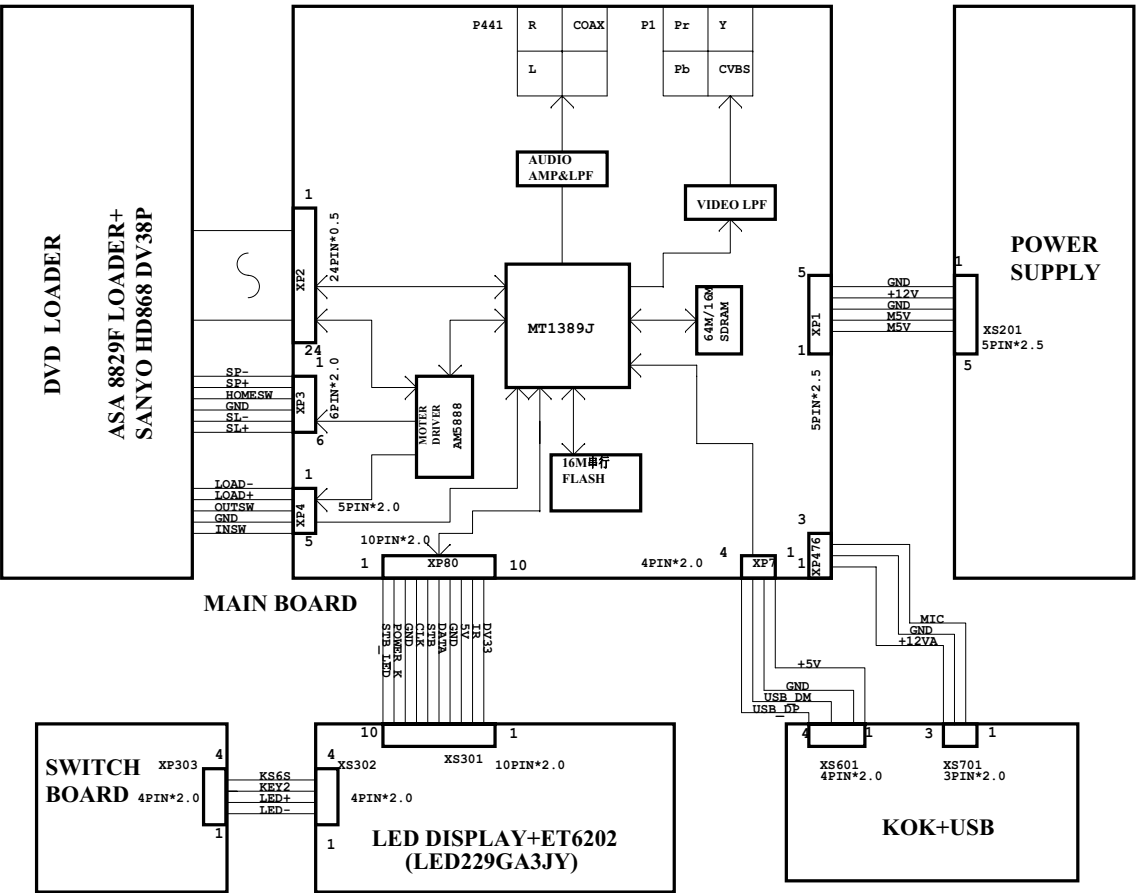
**Abnormal color of video picture**

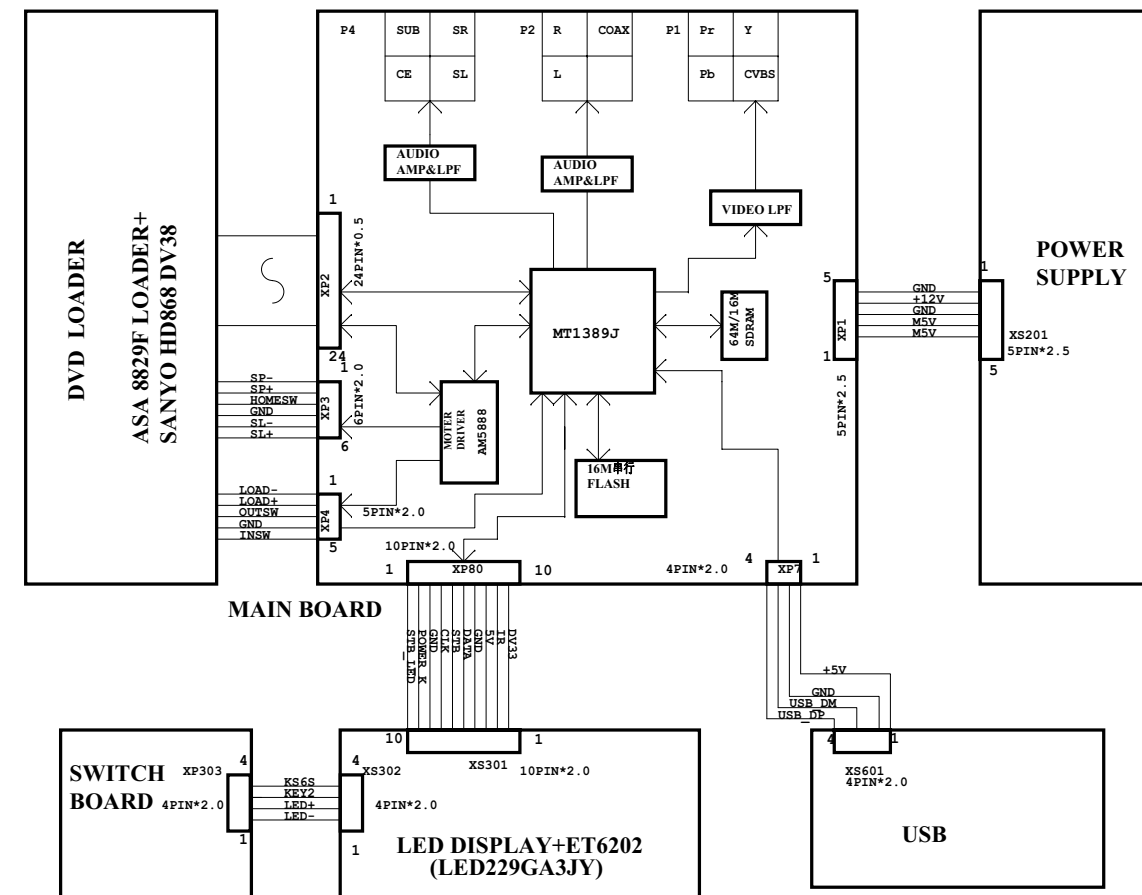


**Remote reception is insensitive or fails.**

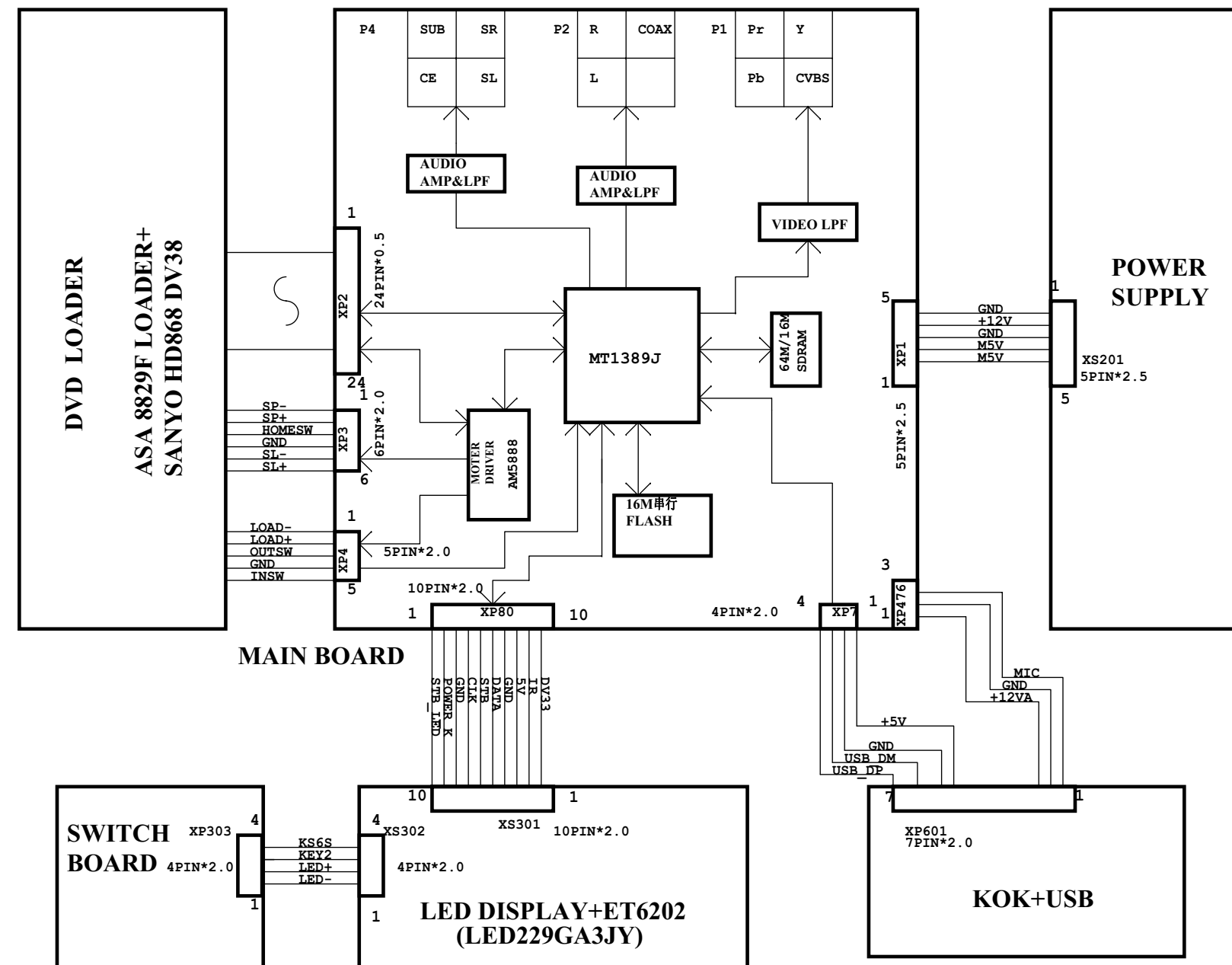
**No video picture, no sound.**

DVP355XK MTK1389J(2CH) WIRING DIAGRAM



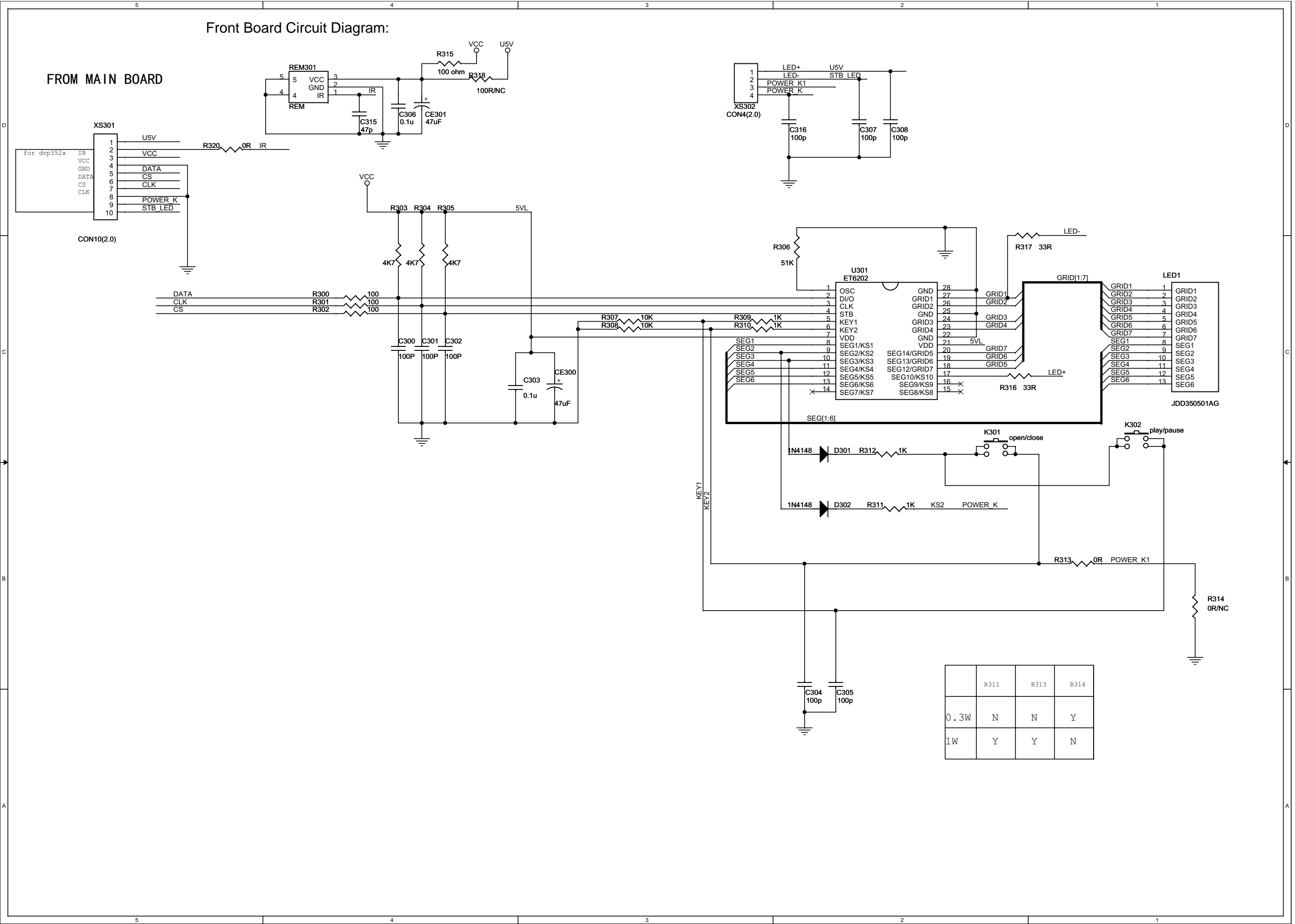
**DVP3556 MTK1389J(6CH) WIRING DIAGRAM**

# DVP3556K MTK1389J(6CH) WIRING DIAGRAM

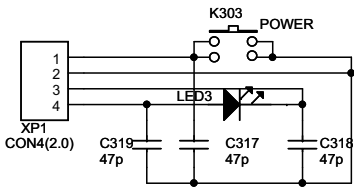




Front Board Circuit Diagram:

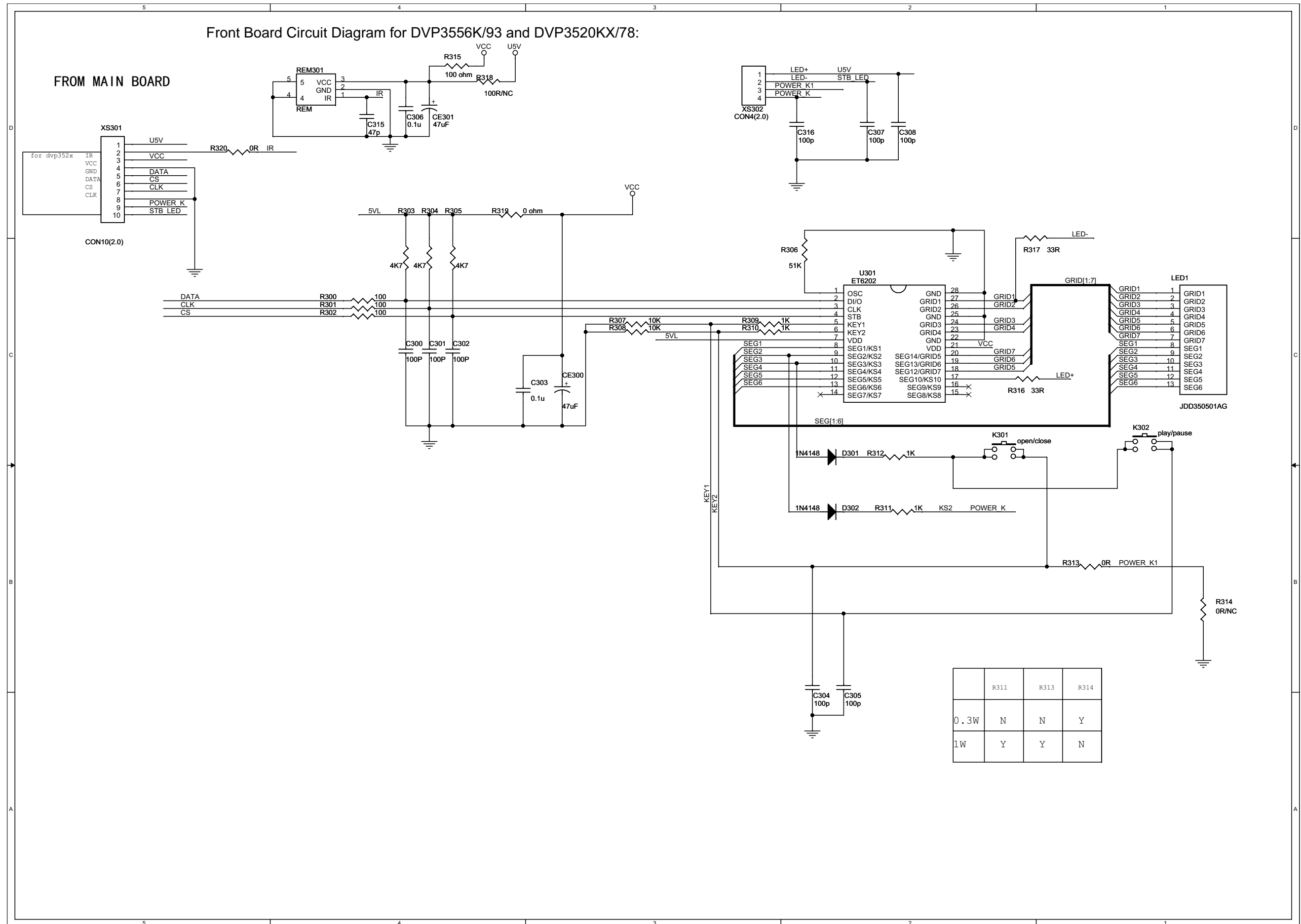


Switch Board Circuit Diagram:



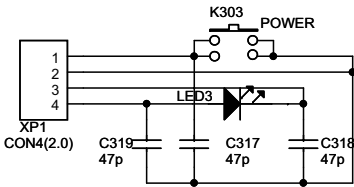
SWITCH BOARD

Front Board Circuit Diagram for DVP3556K/93 and DVP3520KX/78:

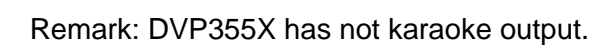


	R311	R313	R314
0.3W	N	N	Y
1W	Y	Y	N

Switch Board Circuit Diagram for DVP3556K/93 and DVP3520KX/78:




SWITCH BOARD

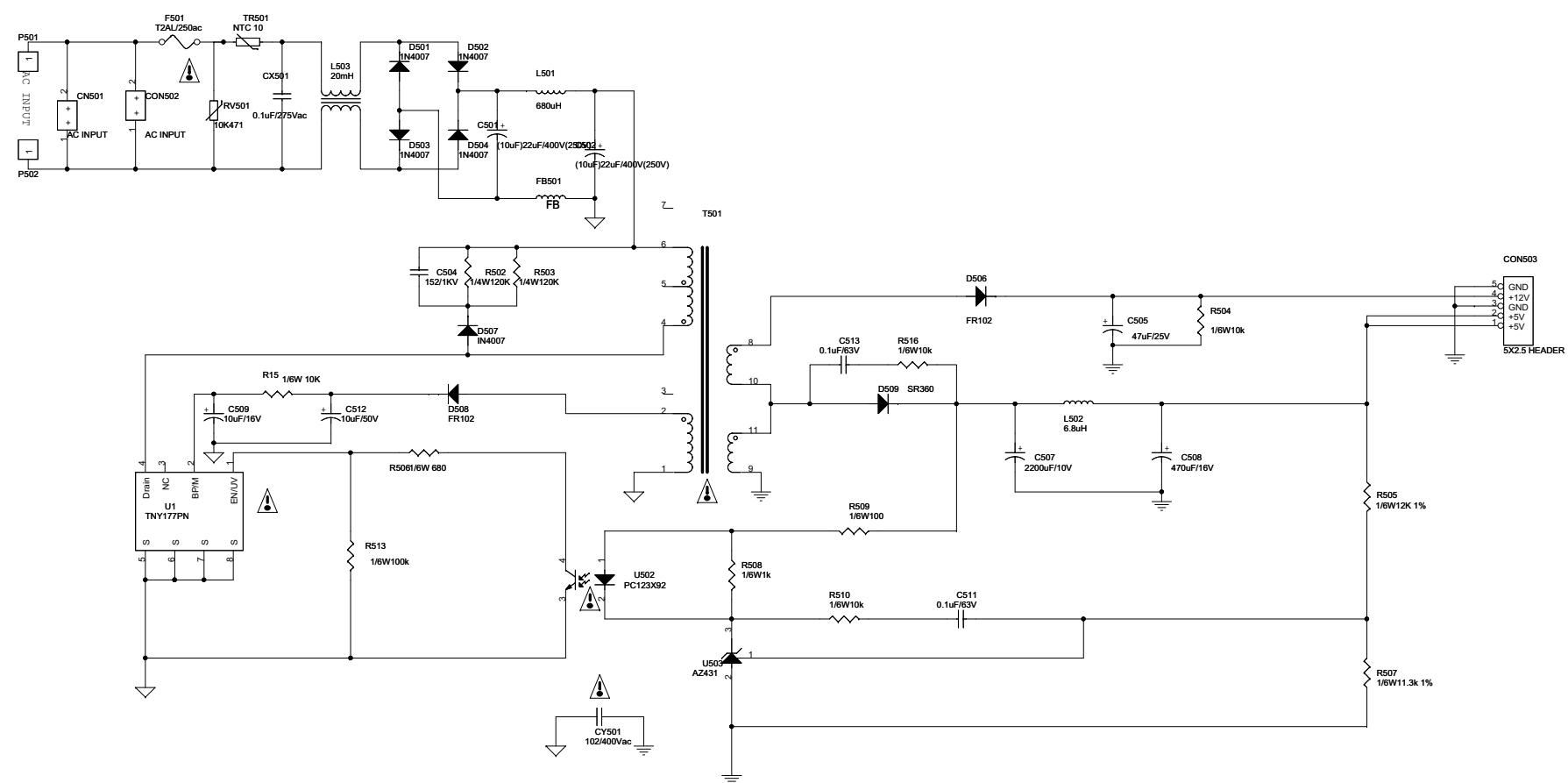




Power Board Circuit Diagram:

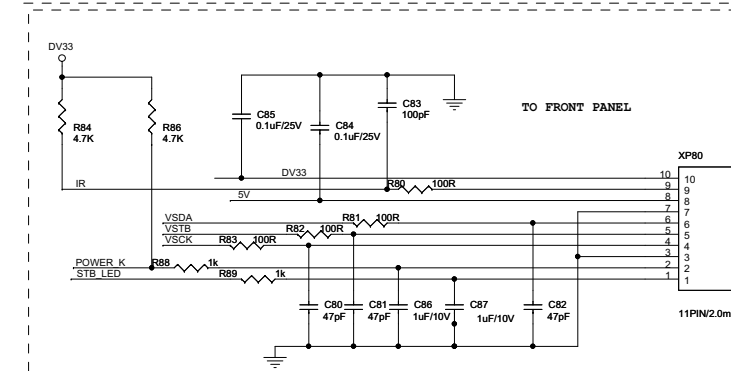
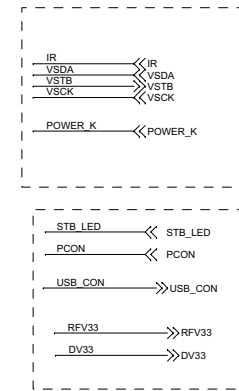
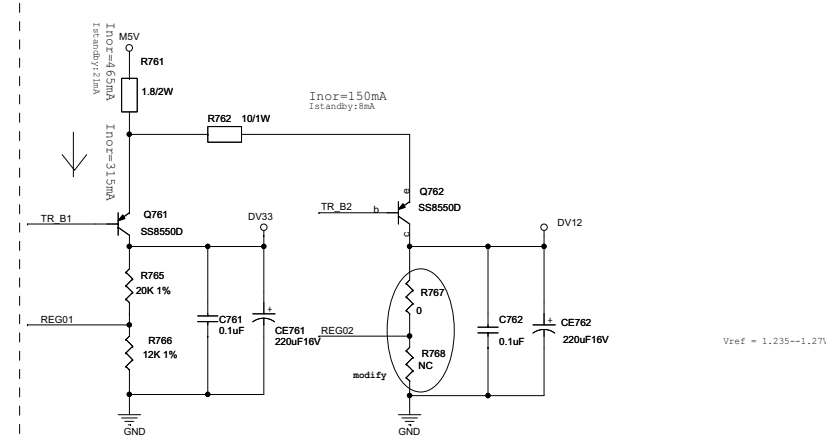
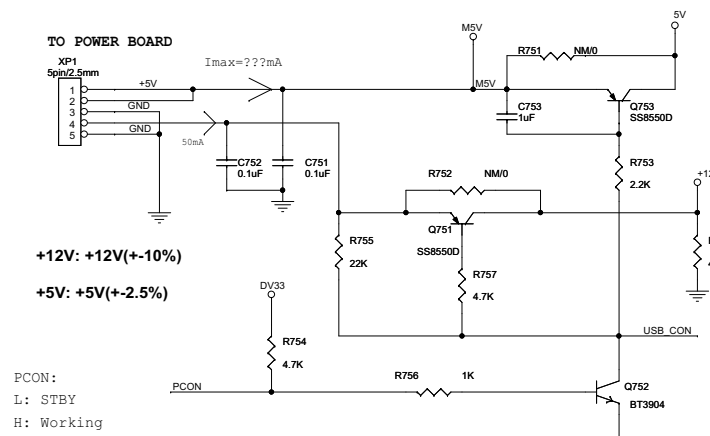
**\* CAUTION :**

THE PARTS MARKED WITH  ARE IMPORTANT PARTS ON THE SAFETY.  
PLEASE USE THE PARTS HAVING THE DESIGNATED PARTS NUMBER WITHOUT FAIL.



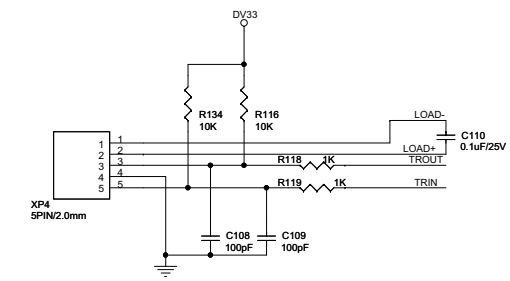
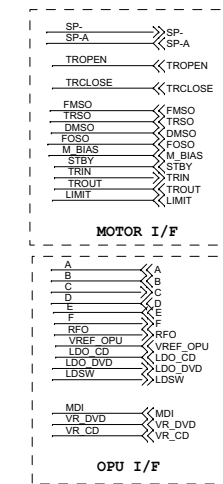
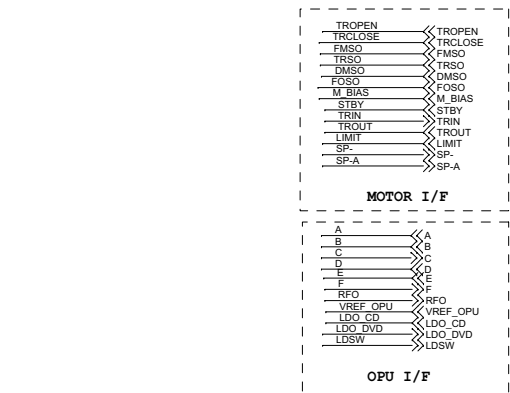
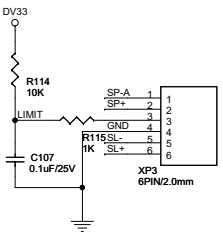
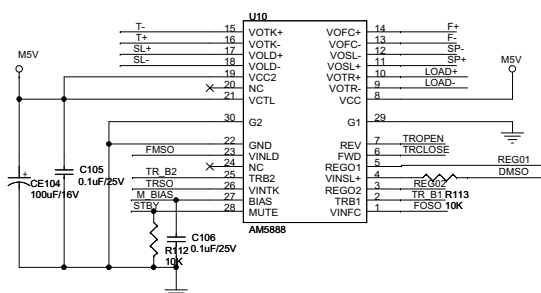
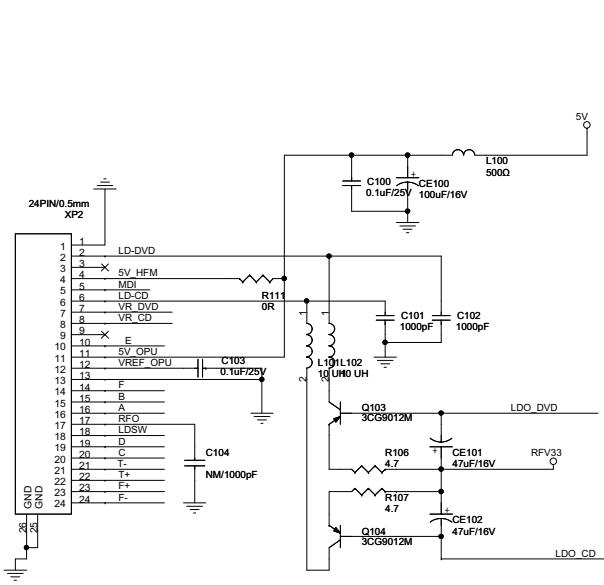
\* PROHIBIT the use of Class 1 environment management materials of SS-00259  
 \* All of moulding resinous, ink, paint and coating electric wire must be ordered from designated GP supplier of Philips.

### Main Board Circuit Diagram: POWER/MOTOR DRIVER



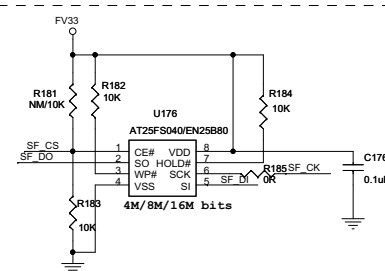
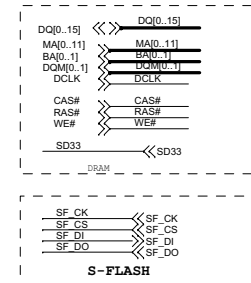
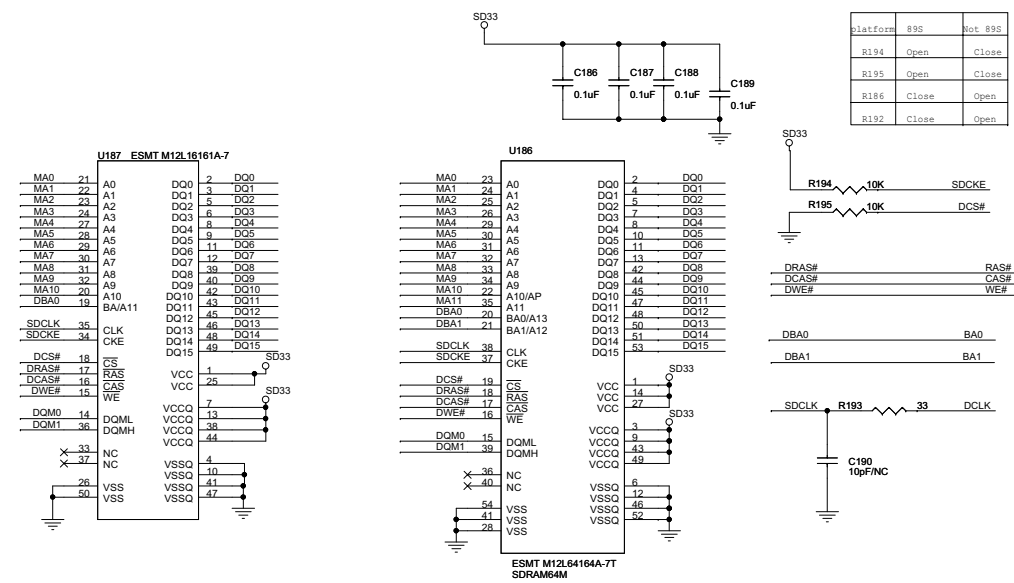
For MTK platforms

DMSO:SPINDLE MOTO  
FMSO:FEED MOTO,i.e Sledge motor  
TRSO:Track error  
FOSO:Focus error



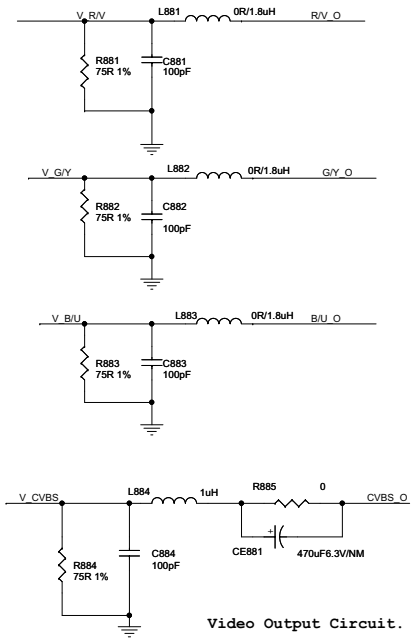
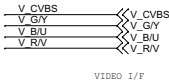


## Main Board Circuit Diagram: SDRAM&amp;FLASH

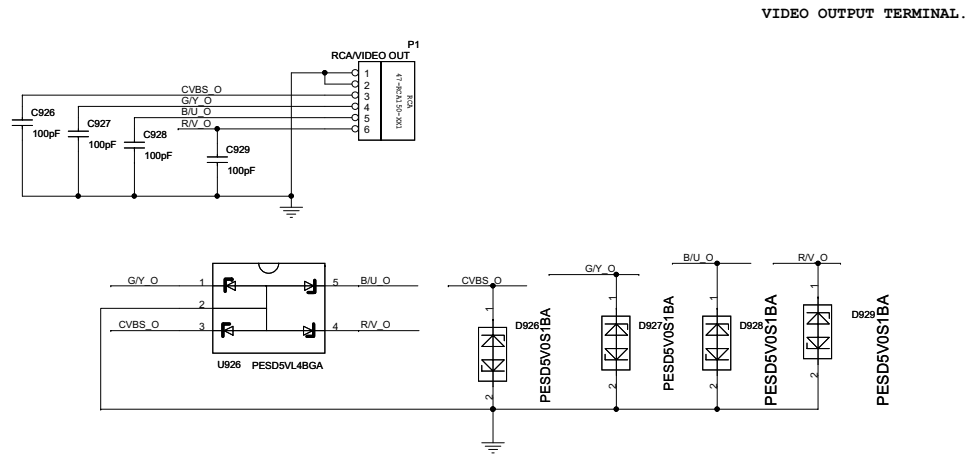




Main Board Circuit Diagram: VIDEO I/F

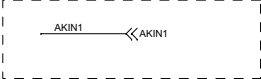
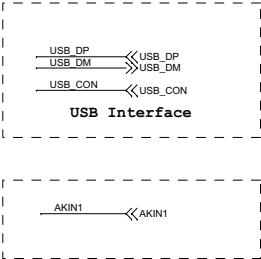
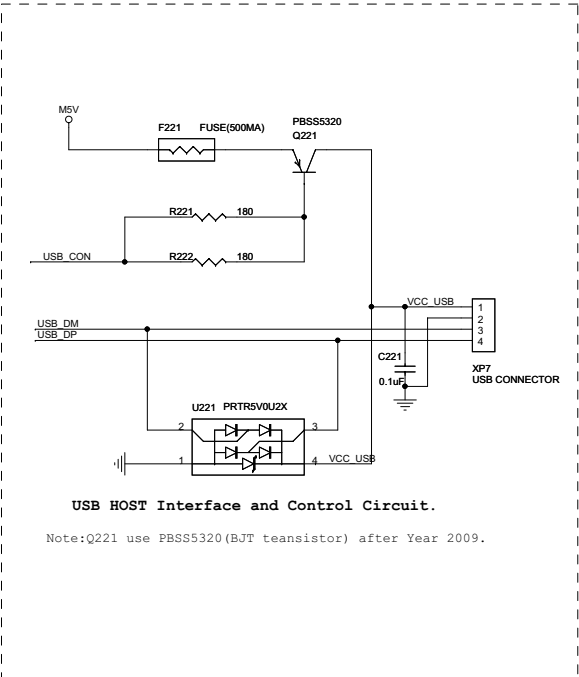
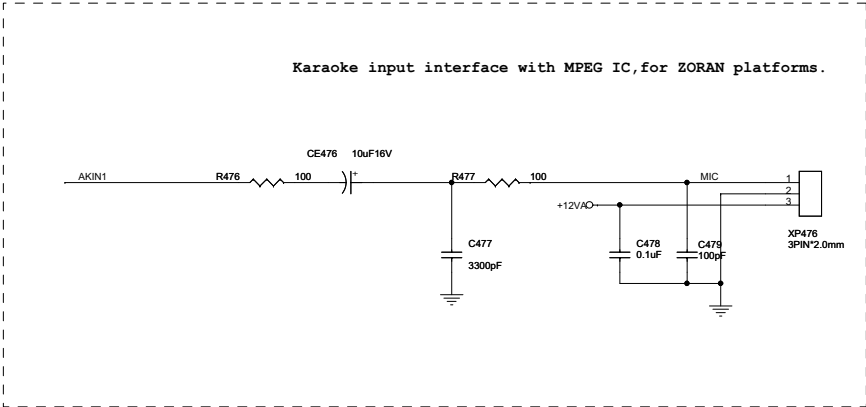


Note:Only CE61(470uF/6.3V) use for India stroke.unless other use R230(0 OHM)



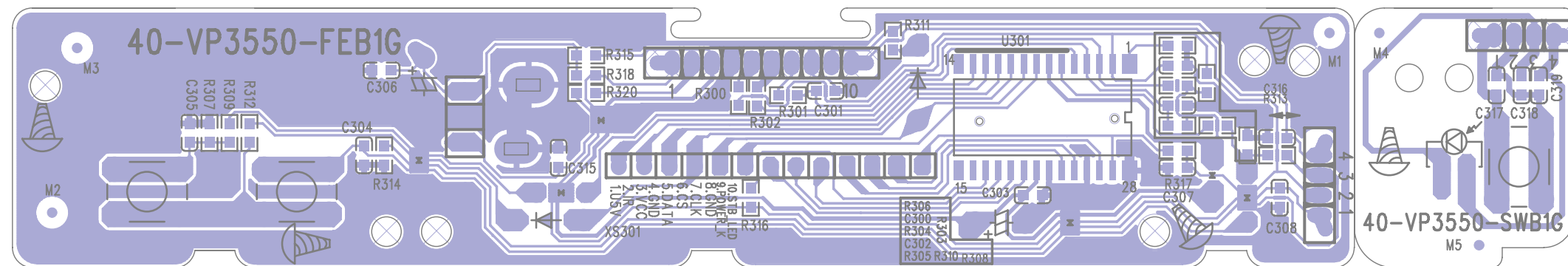
NOTE1:D926,D927,D928,D929 only for 94/55/77/78(ie.India/Latin America /Argentina/Brazil) stroke,Other Stroke use U926

Main Board Circuit Diagram: KOK&USB I/F



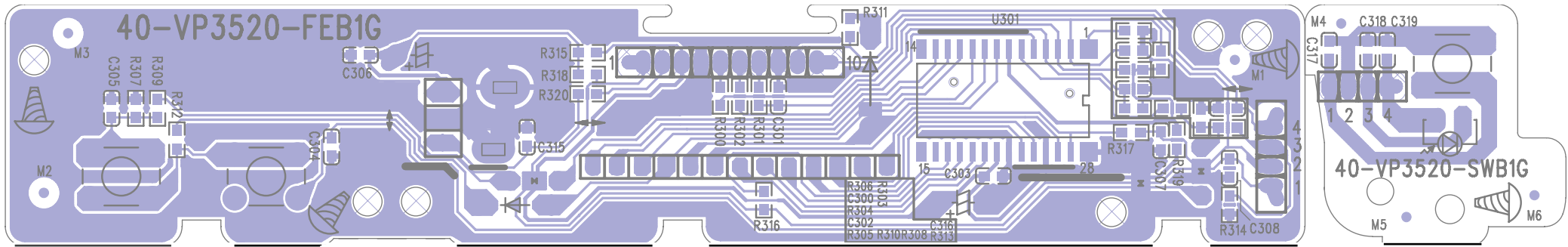
Remark: DVP355X has not karaoke output.

Front Board Print-layout (Bottom side):

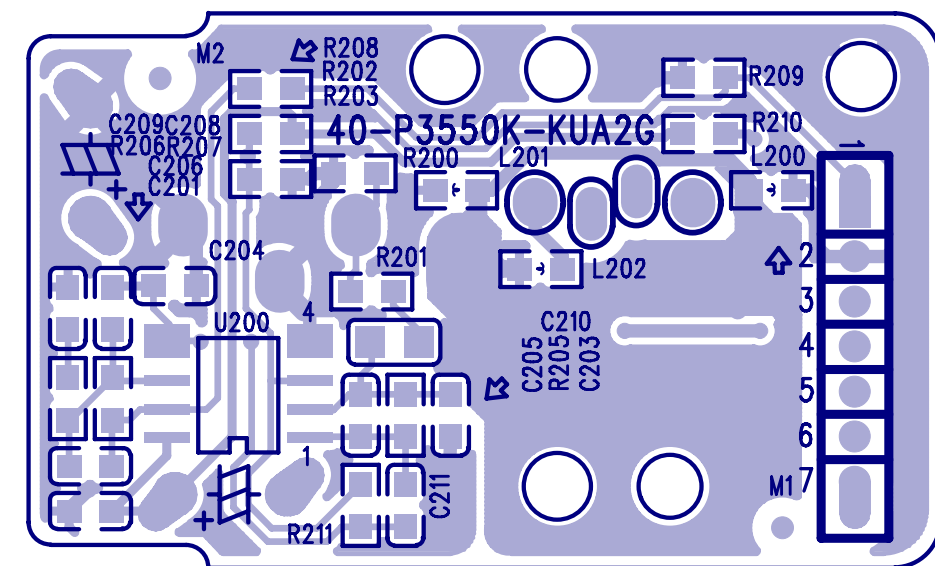
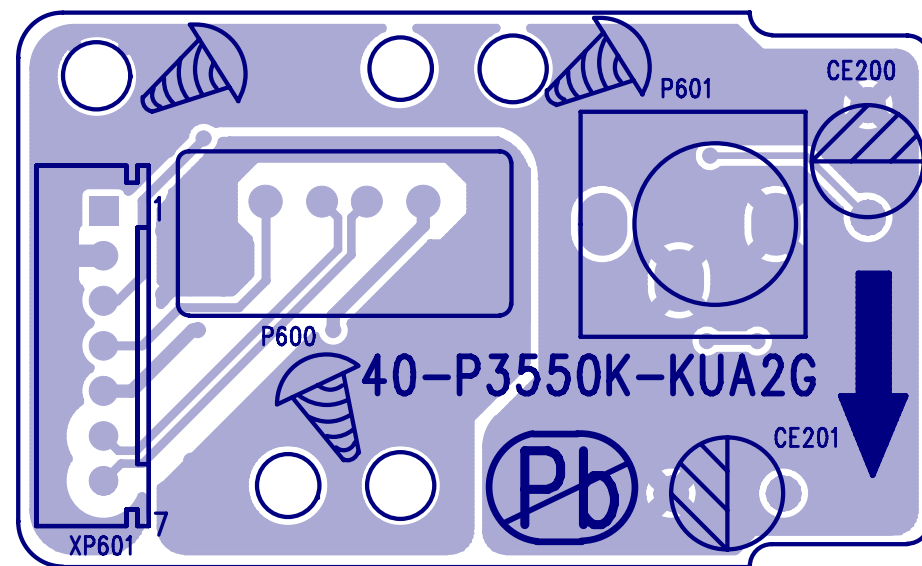




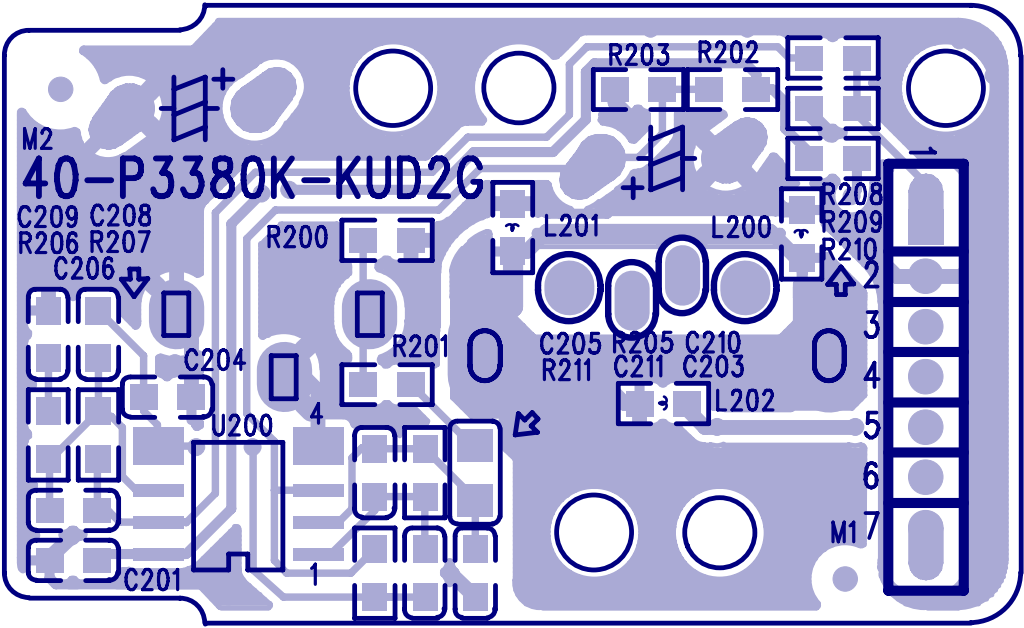
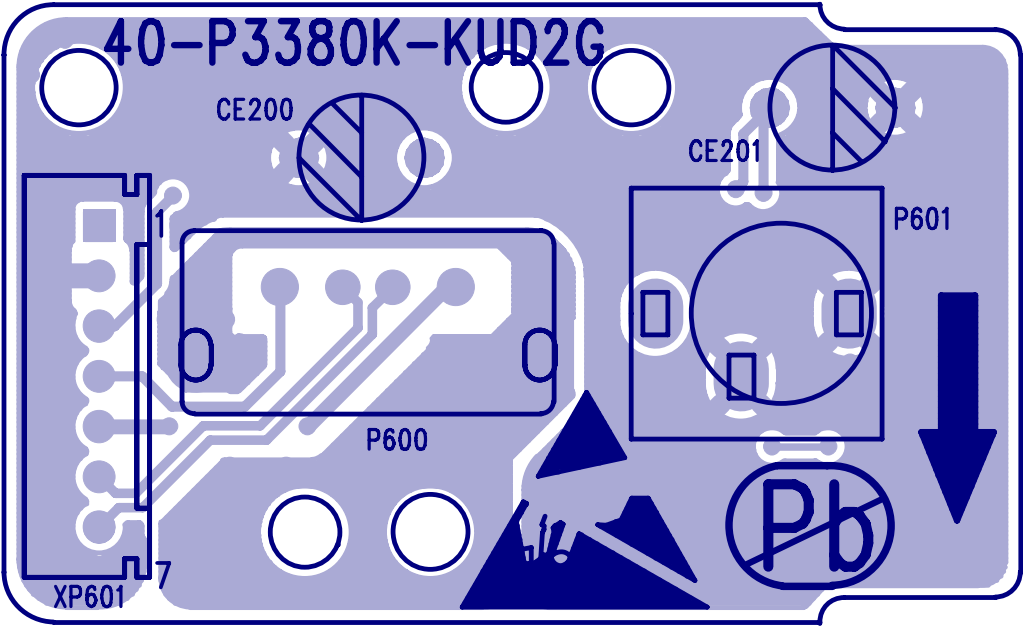
Front Board and Switch Board Print-layout for DVP3556K/93 and DVP3520KX/78 (Bottom side):



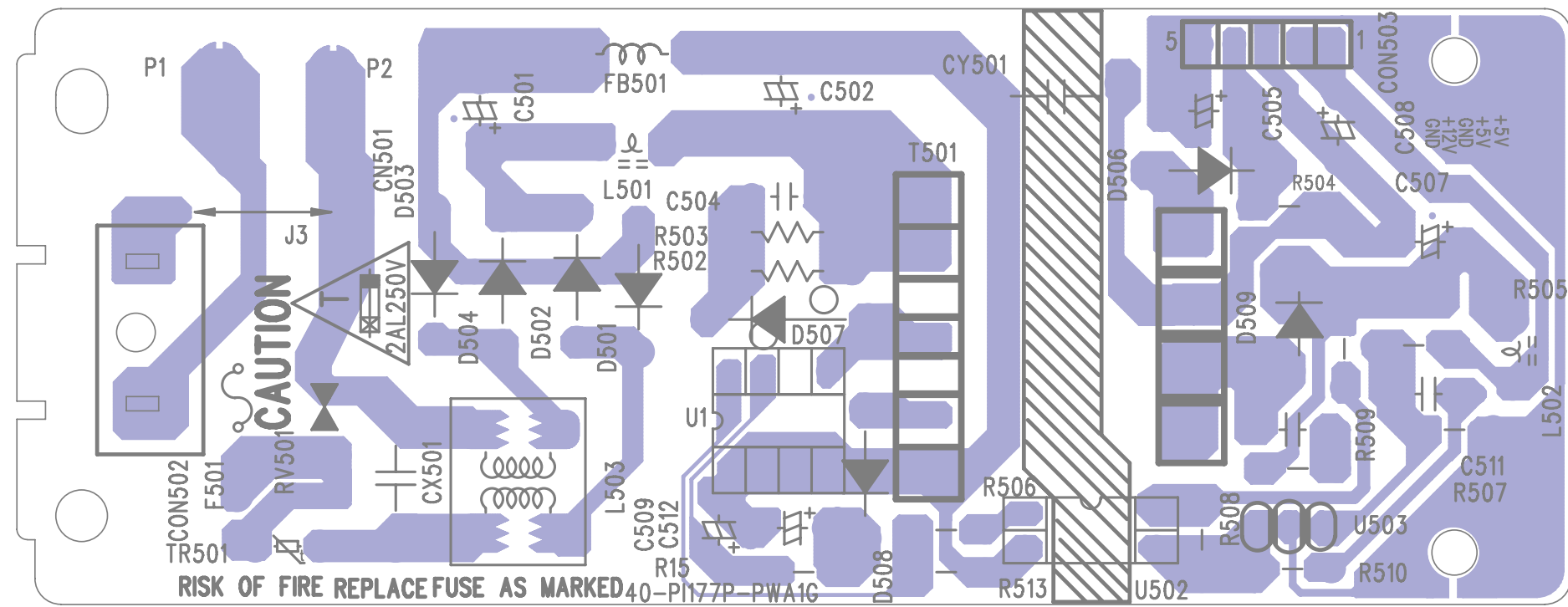
OK Board and USB Board Print-layout (Top and Bottom side):



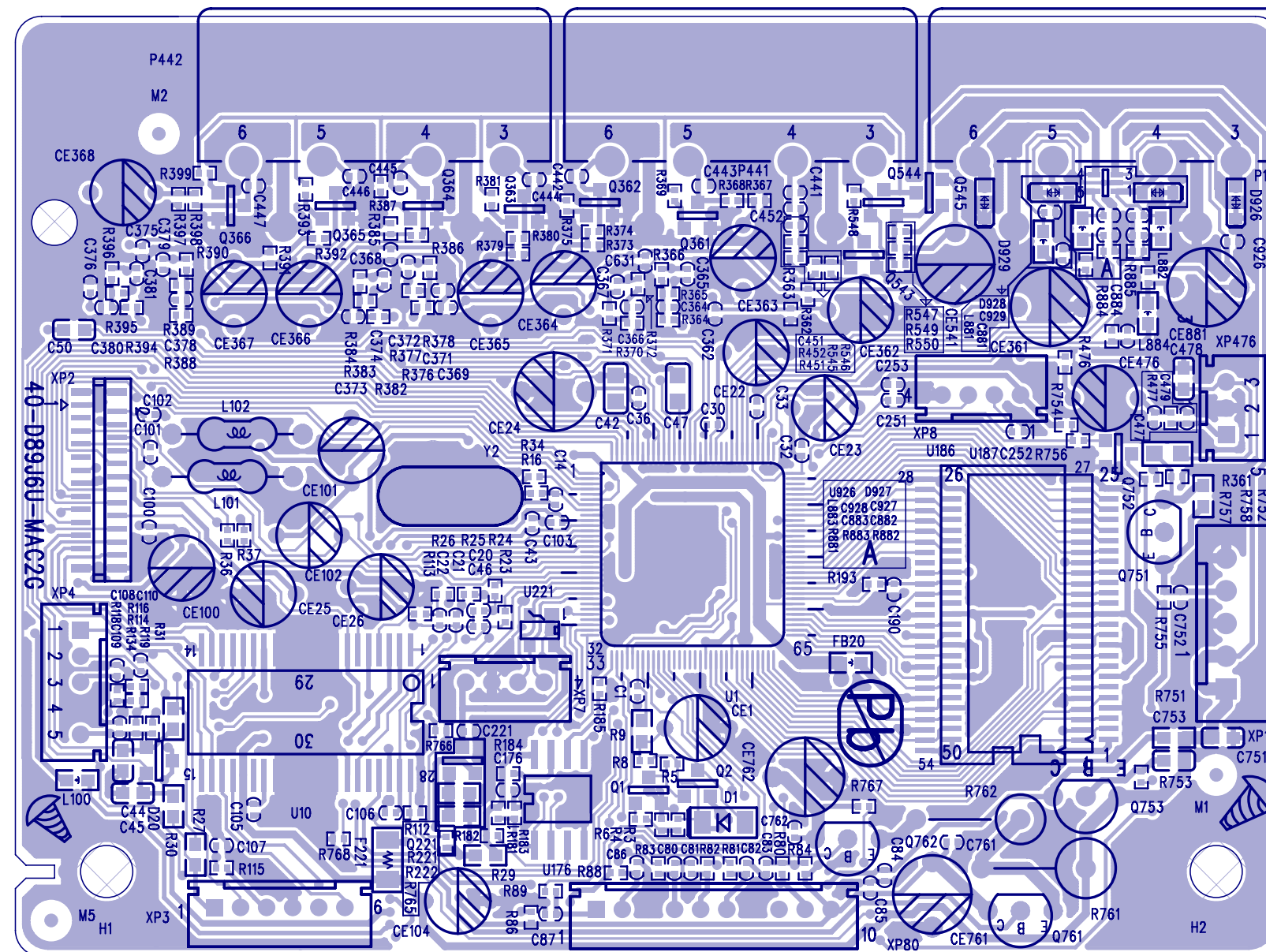
OK+USB Board Print-layout for DVP3556K/93 and DVP3520KX/78 (Top and Bottom side):



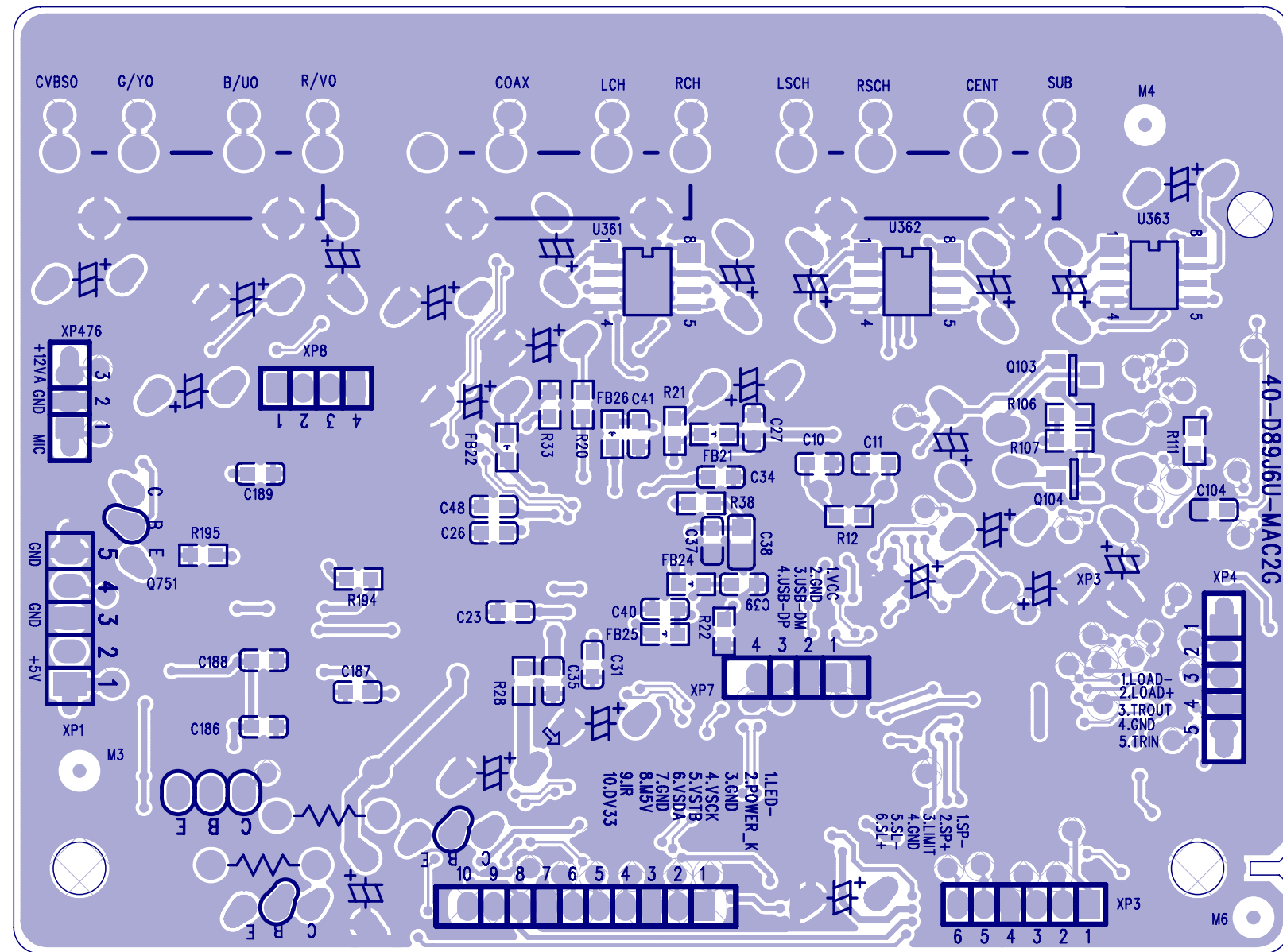
Power Board Print-layout (Bottom side):



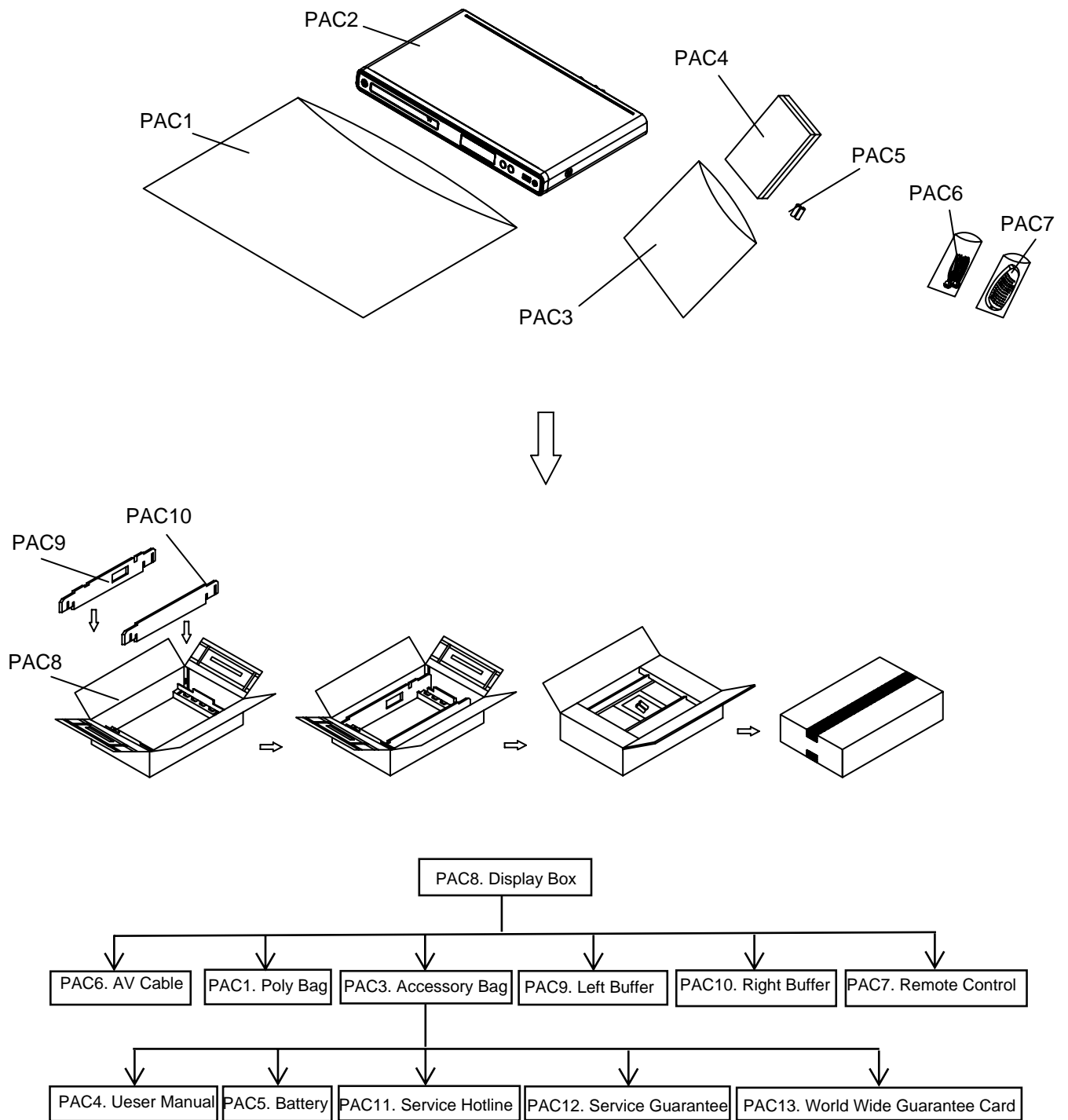
Main Board Print-layout (Top side):



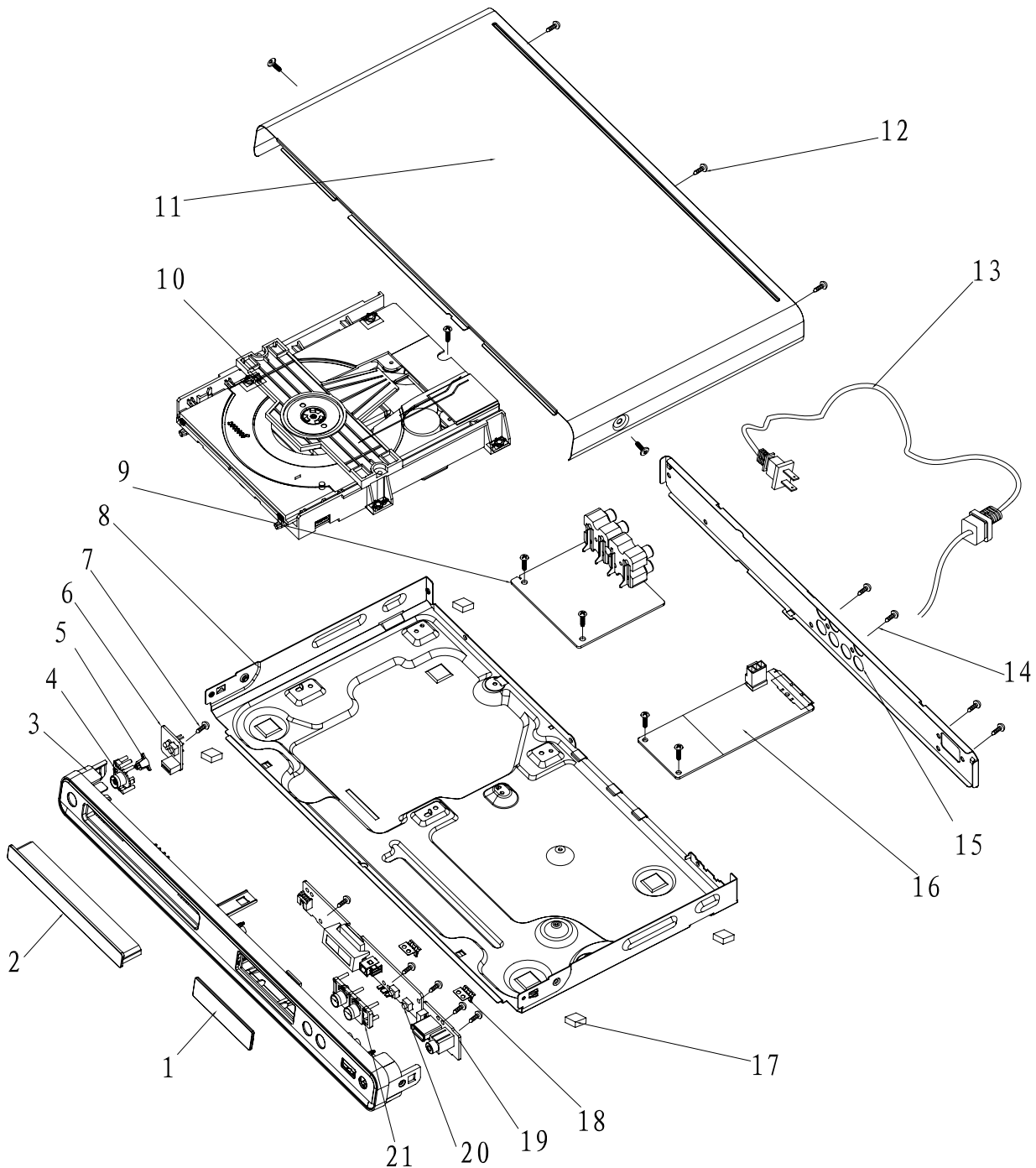
Main Board Print-layout (Bottom side):



## DVP3350K/93 Packing View:



Exploded view for DVP3550K/55:

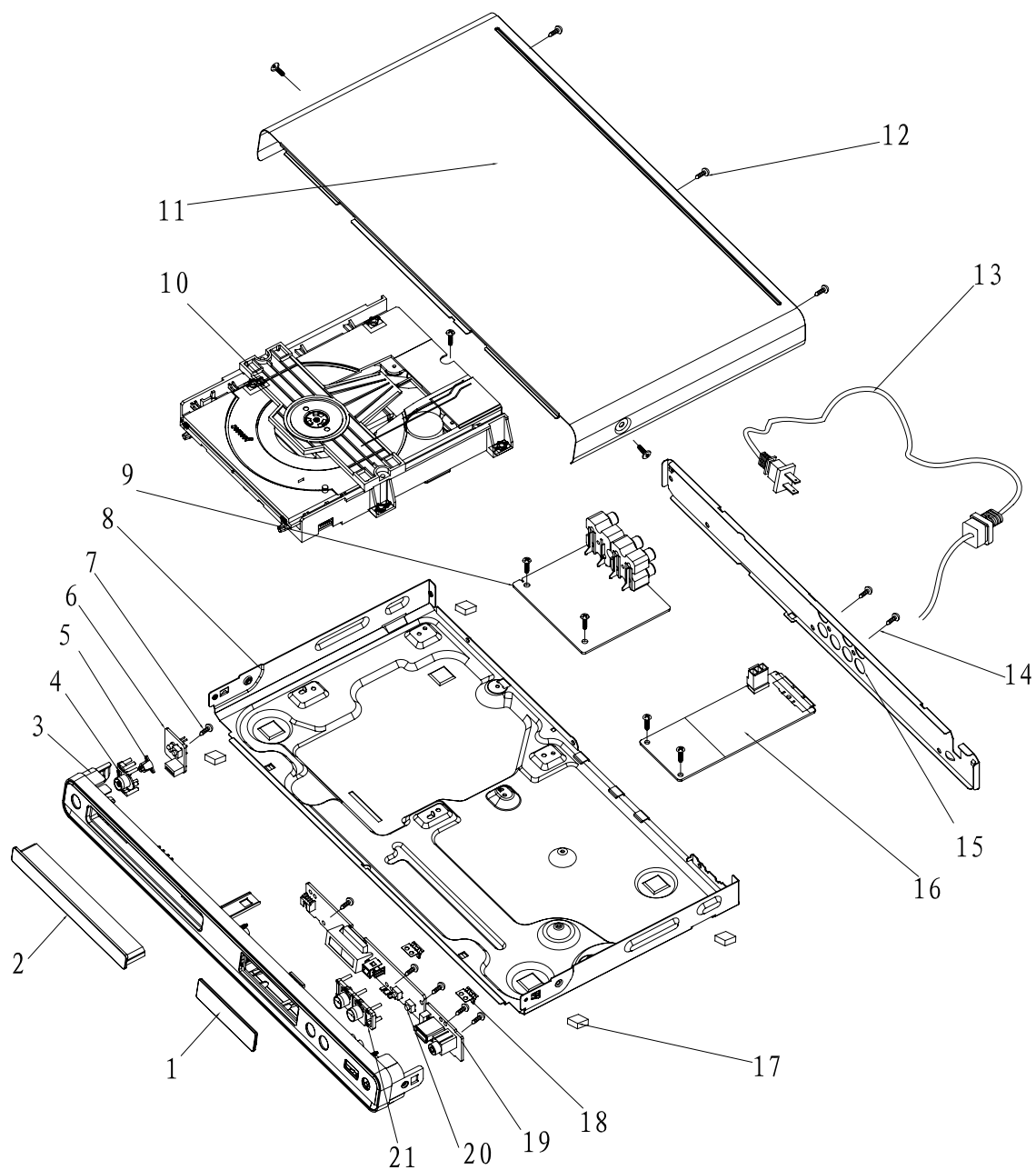


It is a general mechanical exploded view for DVP3550K/55, pls refer to model set for detailed information.

ASSY1 includes components:1.3.4.5.21

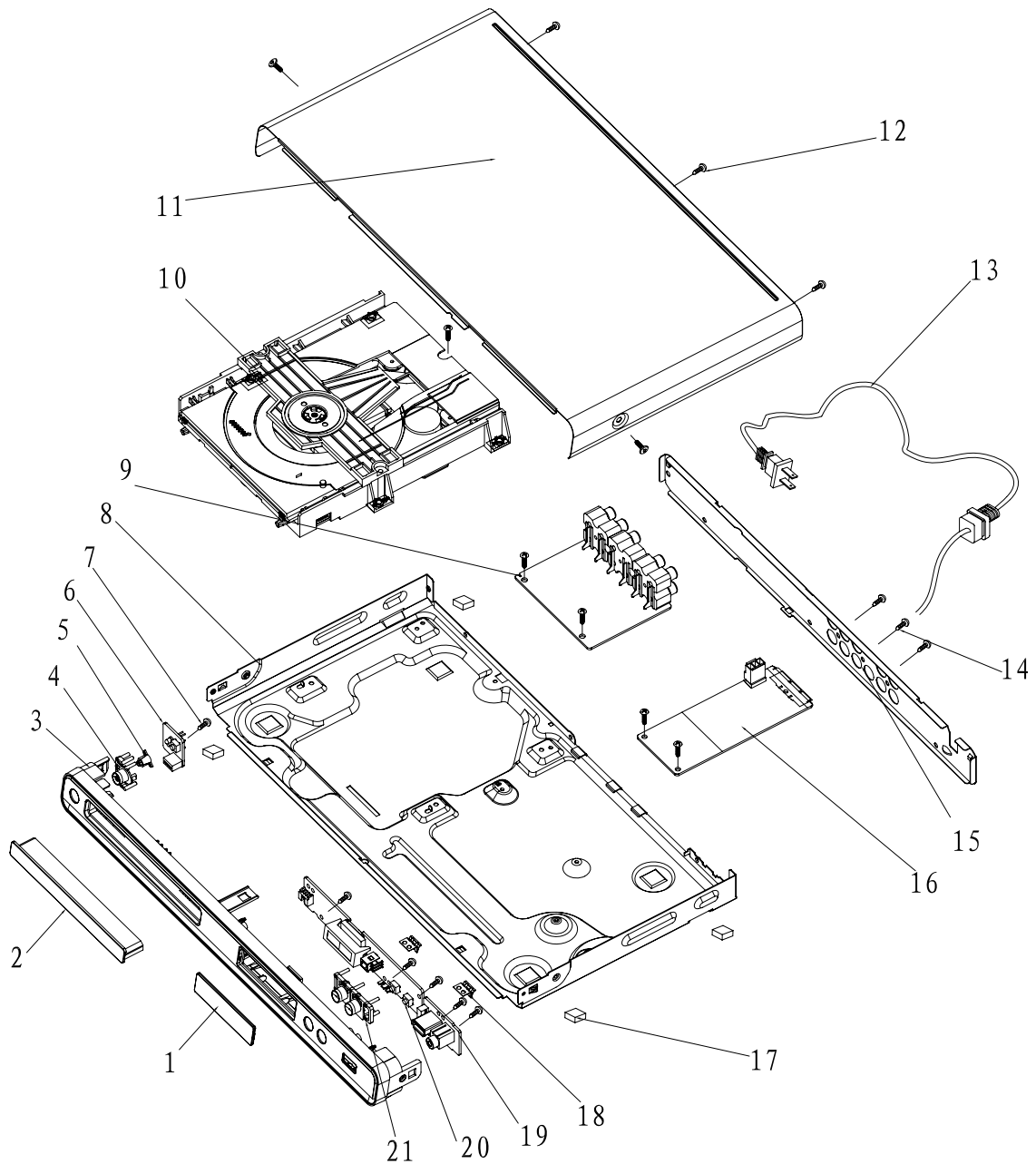


Exploded view for DVP3550K/93:



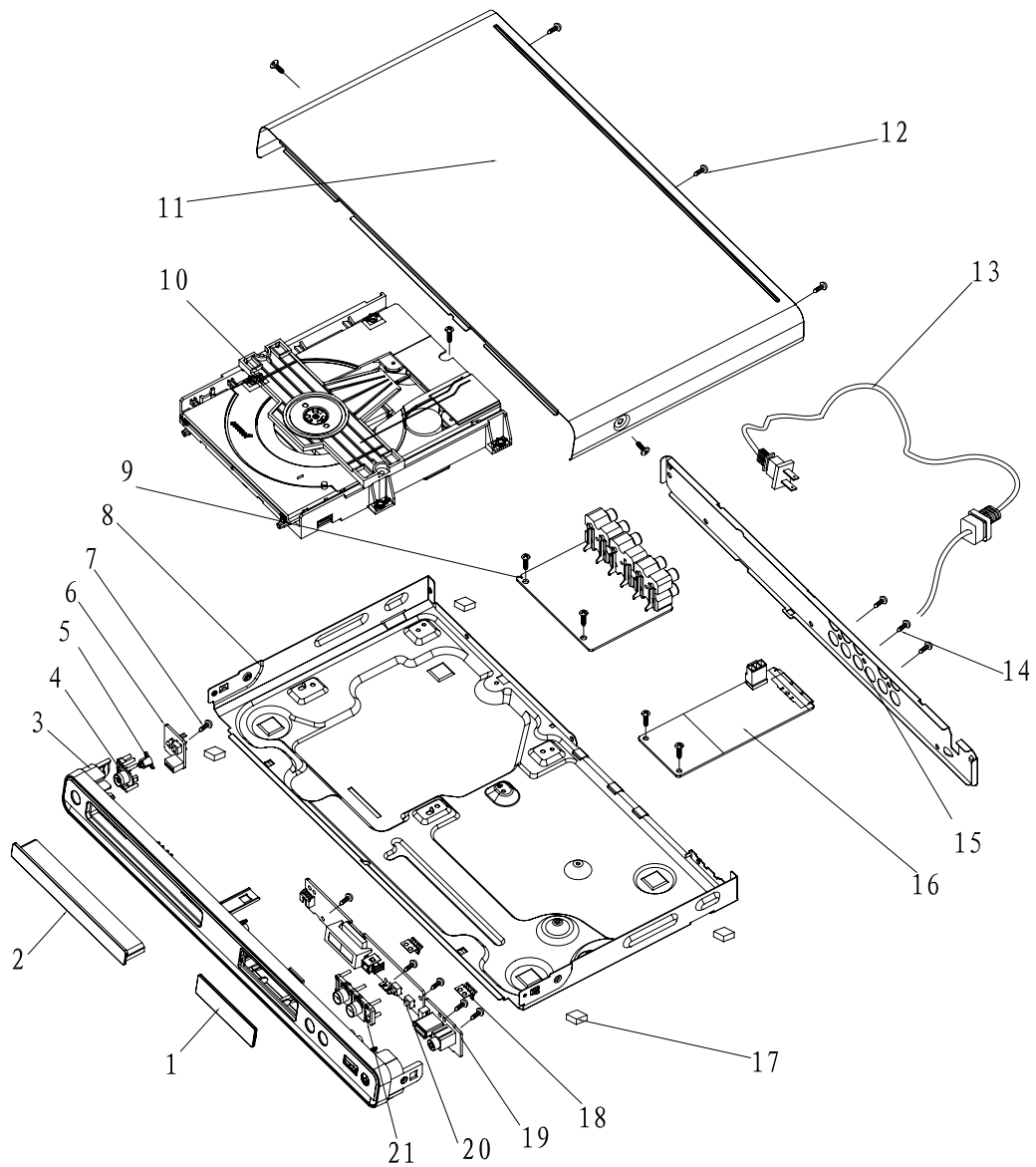
It is a general mechanical exploded view for DVP3550K/93, pls refer to model set for detailed information.  
ASSY1 includes components:1.3.4.5.21

Exploded view for DVP3556(X)/94:



It is general mechanical exploded view for DVP3556(X)/94, pls refer to the model set for detailed information.  
 ASSY1 includes components: 1.3.4.5.21

Exploded view for DVP3556K/93:



It is general mechanical exploded view for DVP3556K/93, pls refer to model set for detailed information.  
ASSY1 includes components:1.3.4.5.21

## DVP3550K/55 SERVICE PARTLIST

## ELECTRICAL PARTLIST

No	12NC No.	Description	Q'ty
9	996510031296	ASSY-MAIN BD	1
⚠ 16	996510031295	ASSY-PW BD	1
19	996510031284	ASSY-KU BD	1
20	996510031287	ASSY-FB BD	1
6	996510031286	ASSY-SW BD	1
10	996510031298	ASSY-LOADER	1
OPU	996510031294	SANYO DV38	1

## ASSY-MAIN BD COMPONENT PARTLIST

NO	12NC NO.	Description	Q'ty
D1	996510014439	SMD. SWITCHING DIODE LL4148	1
D20	996510009668	BAT54C	1
D926	996510020926	IC PESD5V0S1BA	1
D927	996510020926	IC PESD5V0S1BA	1
D928	996510020926	IC PESD5V0S1BA	1
D929	996510020926	IC PESD5V0S1BA	1
L101	996500014082	COIL CHOKE 10UH +/-10%	1
L102	996500014082	COIL CHOKE 10UH +/-10%	1
Q1	996510009669	SMD.TRANSISTOR MMBT3904LT1 NPN	1
Q103	996510009670	TRANSISTOR SMT 3CG9012M	1
Q104	996510009670	TRANSISTOR SMT 3CG9012M	1
Q2	996510009669	SMD.TRANSISTOR MMBT3904LT1 NPN	1
Q221	996510022279	PNP TRANSISTOR SOT-23PBSS5320T	1
Q361	996510009669	SMD.TRANSISTOR MMBT3904LT1 NPN	1
Q362	996510009669	SMD.TRANSISTOR MMBT3904LT1 NPN	1
Q543	996510009669	SMD.TRANSISTOR MMBT3904LT1 NPN	1
Q544	996510009670	TRANSISTOR SMT 3CG9012M	1
Q545	996510009670	TRANSISTOR SMT 3CG9012M	1
Q751	996510009671	PNP TRANSISTOR	1
Q752	996510009669	SMD.TRANSISTOR MMBT3904LT1 NPN	1
Q753	996510009671	PNP TRANSISTOR	1
Q761	996510009671	PNP TRANSISTOR	1
Q762	996510009671	PNP TRANSISTOR	1
U1	996510031297	IC MTK1389DXE/J MPEG	1
U10	996510011055	IC CD5888CB	1
U176	996510031293	16M FLASH 86MHZ MX25L1605DM2	1
U186	996510031282	4*16M SDRAM EM638165TS -6T	1
U221	996510013349	HDMI USB ESD PYOTECTION IC	1
U361	996500032494	IC AS4558M	1
Y2	996510009675	27MCL20PF	1

## ASSY-PW BD COMPONENT PARTLIST

NO	12NC NO.	Description	Q'ty
D501	996510011047	DIODE IN4007	1
D502	996510011047	DIODE IN4007	1
D503	996510011047	DIODE IN4007	1
D504	996510011047	DIODE IN4007	1
D506	996500014043	DIODE FR102 (FAST RECOVERY)	1
D507	996510011047	DIODE IN4007	1
D508	996500014043	DIODE FR102 (FAST RECOVERY)	1
D509	996500027866	DIODE SR360 3A/60V	1
L501	996510009942	COIL WIDTH	1
L502	996500032509	COIL SL0811-6R8K2R4	1
⚠ T501	996510031291	TRANSFORMER EE-19\BCK-03EE19	1
U1	996510010953	IC TNY176PN	1
U502	996500027867	PHOTOCOUPLER PS2561L1-1-V(WF)	1
U503	996510010419	REG DE PRECISAO AJUSTAVEL	1

## ASSY-KU BD COMPONENT PARTLIST

NO	12NC NO.	Description	Q'ty
U200	996500032494	IC AS4558M	

## ASSY-FB BD COMPONENT PARTLIST

NO	12NC NO.	Description	Q'ty
LED1	996510020917	J2808AG	1
REM301	996510020925	HM338-12 RECEIVER MOD H=12MM	1
U301	996510009665	IC ET6202 SOP-2	1

## MECHANICAL PARTLIST

No	12NC No.	Description	Q'ty
11	996510031301	TOP COVER	1
⚠ 13	996510001175	POWER CORD	1
15	996510031289	BACK PANEL	1
17	996510006463	PAD	4
2	996510031283	FRONT DOOR	1
8	996510031292	BOTTOM CABINET	1
AVCABLE	996510001106	VIDEO CABLE 1500mm	1
Assy1	996510031288	ASSY-FRONT DOOR	1
CON503	996510021468	CONNECTOR (L3-5Y	1
PSOCKET	996510020885	POWER SOCKET transition	1
RC	996510031299	REMOTE CONTROL	1
XP1	996510029492	4PIN CABLE	1
XP2	996510001168	24PIN HS	1
XP3	996510021448	6PIN HS	1
XP4	996510004063	CABLE PH-5Y/PH-5Y L=130MM	1
XP601	996510020932	7PIN USB+KOK LINE PH-4Y/PH-3Y	1
XS301	996510031285	10PIN CABLE L=140MM 1&10	1

## SCREWS LIST:

No	12NC No.	Description	Q'ty
7	—	S/T SCREW B 2.6 X 8 BF	6
12	—	S/T SCREW B3 X 6 BF	9
14	—	S/T SCREW B 3 X 7 BF	5

**DVP3550K/93 SERVICE PARTLIST****ELECTRICAL PARTLIST**

No	12NC No.	Description	Q'ty
9	996510031355	ASSY-MAIN BOARD	1
⚠ 16	996510031357	ASSY-POWER BOARD	1
19	996510031284	ASSY-KU BD	1
20	996510031287	ASSY-FB BD	1
6	996510031286	ASSY-SW BD	1
10	996510031298	ASSY-LOADER	1
OPU	996510031294	SANYO DV38	1

**ASSY-MAIN BD COMPONENT PARTLIST**

NO	12NC NO.	Description	Q'ty
D1	996510014439	SMD. SWITCHING DIODE LL4148	1
D20	996510009668	BAT54C	1
L101	996500014082	COIL CHOKE 10UH +/-10%	1
L102	996500014082	COIL CHOKE 10UH +/-10%	1
Q1	996510009669	SMD.TRANSISTOR MMBT3904LT1 NPN	1
Q103	996510009670	TRANSISTOR SMT 3CG9012M	1
Q104	996510009670	TRANSISTOR SMT 3CG9012M	1
Q2	996510009669	SMD.TRANSISTOR MMBT3904LT1 NPN	1
Q221	996510022279	PNP TRANSISTOR SOT-23PBSS5320T	1
Q361	996510009669	SMD.TRANSISTOR MMBT3904LT1 NPN	1
Q362	996510009669	SMD.TRANSISTOR MMBT3904LT1 NPN	1
Q543	996510009669	SMD.TRANSISTOR MMBT3904LT1 NPN	1
Q544	996510009670	TRANSISTOR SMT 3CG9012M	1
Q545	996510009670	TRANSISTOR SMT 3CG9012M	1
Q751	996510009671	PNP TRANSISTOR	1
Q752	996510009669	SMD.TRANSISTOR MMBT3904LT1 NPN	1
Q753	996510009671	PNP TRANSISTOR	1
Q761	996510009671	PNP TRANSISTOR	1
Q762	996510009671	PNP TRANSISTOR	1
U1	996510031297	IC MTK1389DXE/J MPEG	1
U10	996510009674	IC AM5888IC	1
U176	996510020916	16M SPI FLASH EON	1
U186	996510021455	64M SDRAM -6NS TSP54	1
U221	996510013349	HDMI USB ESD PYOTECTION IC	1
U361	996500032494	IC AS4558M	1
U926	996510021013	IC PESD5VL4UG	1
Y2	996510009675	27MCL20PF	1

**ASSY-PW BD COMPONENT PARTLIST**

NO	12NC NO.	Description	Q'ty
D501	996510011047	DIODE IN4007	1
D502	996510011047	DIODE IN4007	1
D503	996510011047	DIODE IN4007	1
D504	996510011047	DIODE IN4007	1
D506	996500014043	DIODE FR102 (FAST RECOVERY)	1
D507	996510011047	DIODE IN4007	1
D508	996500014043	DIODE FR102 (FAST RECOVERY)	1
D509	996500027866	DIODE SR360 3A/60V	1
L501	996510009942	COIL WIDTH	1
L502	996500032509	COIL SL0811-6R8K2R4	1
⚠ T501	996510031291	TRANSFORMER EE-19\BCK-03EE19	1
U1	996510010953	IC TNY176PN	1
U502	996500027867	PHOTOCOUPLER PS2561L1-1-V(WF)	1
U503	996510010419	REG DE PRECISAO AJUSTAVEL	1

**ASSY-KU BD COMPONENT PARTLIST**

NO	12NC NO.	Description	Q'ty
U200	996500032494	IC AS4558M	1

**ASSY-FB BD COMPONENT PARTLIST**

NO	12NC NO.	Description	Q'ty
LED1	996510020917	J2808AG	1
REM301	996510020925	HM338-12 RECEIVER MOD H=12MM	1
U301	996510009665	IC ET6202 SOP-2	1

**MECHANICAL PARTLIST**

No	12NC No.	Description	Q'ty
11	996510031301	TOP COVER	1
⚠ 13	996510021454	3C PLUG POWER CORD	1
15	996510031354	BACK PANEL	1
17	996510006463	PAD	4
2	996510031283	FRONT DOOR	1
8	996510031292	BOTTOM CABINET	1
ABAG	996510018311	ACCESSORY BAG	1
AVCABLE	996510001106	VIDEO CABLE 1500mm	1
Assy1	996510031288	ASSY-FRONT DOOR	1
CON503	996510021468	CONNECTOR (L3-5Y	1
DBOX	996510031352	DISPLAY BOX	1
HOTLINE	996500042132	SERVICE HOT LINE	1
LBUFFER	996510031356	LEFT PAPER PAD	1
PBAG	996510019879	POLY BAG	1
QSG	996510031351	QSG	1
RBUFFER	996510031349	RIGHT PAPER PAD	1
RC	996510031353	REMOTE CONTROL	1
SGTEE	996500033761	SERVICE GUARANTEE	1
WCARD	996510019880	Worldwidguarantcard	1
XP2	996510001168	24PIN HS	1
XP3	996510021448	6PIN HS	1
XP4	996510004063	CABLE PH-5Y/PH-5Y L=130MM	1
XP601	996510020932	7PIN USB+KOK LINE PH-4Y/PH-3Y	1
XS301	996510031285	10PIN CABLE L=140MM 1&10	1

**SCREWS LIST:**

No	12NC No.	Description	Q'ty
7	—	S/T SCREW B 2.6 X 8 BF	6
12	—	S/T SCREW B3 X 6 BF	9
14	—	S/T SCREW B 3 X 7 BF	5

## DVP3556/94 SERVICE PARTLIST

## ELECTRICAL PARTLIST

No	12NC No.	Description	Q'ty
9	996510031887	ASSY-MAIN BOARD	1
△ 16	996510031895	ASSY-POWER BOARD	1
19	996510031893	ASSY-USB BOARD	1
20	996510031287	ASSY-FB BD	1
6	996510031286	ASSY-SW BD	1
10	996510029491	LOADER	1
OPU	996510021449	SANYO LOADER (DV38)	1

## ASSY-MAIN BD COMPONENT PARTLIST

NO	12NC NO.	Description	Q'ty
D1	996510014439	SMD. SWITCHING DIODE LL4148	1
D20	996510009668	BAT54C	1
D926	996510020926	IC PESD5V0S1BA	1
D927	996510020926	IC PESD5V0S1BA	1
D928	996510020926	IC PESD5V0S1BA	1
D929	996510020926	IC PESD5V0S1BA	1
L101	996500014082	COIL CHOKE 10UH +/-10%	1
L102	996500014082	COIL CHOKE 10UH +/-10%	1
Q1	996510009669	SMD.TRANSISTOR MMBT3904LT1 NPN	1
Q103	996510009670	TRANSISTOR SMT 3CG9012M	1
Q104	996510009670	TRANSISTOR SMT 3CG9012M	1
Q2	996510009669	SMD.TRANSISTOR MMBT3904LT1 NPN	1
Q221	996510022279	PNP TRANSISTOR SOT-23PBSS5320T	1
Q361	996510009669	SMD.TRANSISTOR MMBT3904LT1 NPN	1
Q362	996510009669	SMD.TRANSISTOR MMBT3904LT1 NPN	1
Q363	996510009669	SMD.TRANSISTOR MMBT3904LT1 NPN	1
Q364	996510009669	SMD.TRANSISTOR MMBT3904LT1 NPN	1
Q365	996510009669	SMD.TRANSISTOR MMBT3904LT1 NPN	1
Q366	996510009669	SMD.TRANSISTOR MMBT3904LT1 NPN	1
Q543	996510009669	SMD.TRANSISTOR MMBT3904LT1 NPN	1
Q544	996510009670	TRANSISTOR SMT 3CG9012M	1
Q545	996510009670	TRANSISTOR SMT 3CG9012M	1
Q751	996510009671	PNP TRANSISTOR	1
Q752	996510009669	SMD.TRANSISTOR MMBT3904LT1 NPN	1
Q753	996510009671	PNP TRANSISTOR	1
Q761	996510009671	PNP TRANSISTOR	1
Q762	996510009671	PNP TRANSISTOR	1
U1	996510031297	IC MTK1389DXE/J MPEG	1
U10	996510011055	IC CD5888CB	1
U176	996510031892	16M SPI FLASH ESMT DVP3556/94	1
U186	996510012018	IC IC42S16400F-7TL	1
U221	996510013349	HDMI USB ESD PYOTECTION IC	1
U361	996500032494	IC AS4558M	1
U362	996500032494	IC AS4558M	1
U363	996500032494	IC AS4558M	1
Y2	996510009675	27MCL20PF	1

## ASSY-PW BD COMPONENT PARTLIST

NO	12NC NO.	Description	Q'ty
D501	996510011047	DIODE IN4007	1
△ D502	996510011047	DIODE IN4007	1
D503	996510011047	DIODE IN4007	1
D504	996510011047	DIODE IN4007	1
D506	996500014043	DIODE FR102 (FAST RECOVERY)	1
D507	996510011047	DIODE IN4007	1
D508	996500014043	DIODE FR102 (FAST RECOVERY)	1
D509	996500027866	DIODE SR360 3A/60V	1
L501	996510009942	COIL WIDTH	1
L502	996500032509	COIL SL0811-6R8K2R4	1
T501	996510031291	TRANSFORMER EE-19\BCK-03EE19	1
U1	996510010953	IC TNY176PN	1
U502	996500027867	PHOTOCOUPLER PS2561L1-1-V(WF)	1
U503	996510010419	REG DE PRECISAO AJUSTAVEL	1

## ASSY-FB BD COMPONENT PARTLIST

NO	12NC NO.	Description	Q'ty
LED1	996510020917	J2808AG	1
REM301	996510020925	HM338-12 RECEIVER MOD H=12MM	1
U301	996510009665	IC ET6202 SOP-2	1

## MECHANICAL PARTLIST

No	12NC No.	Description	Q'ty
11	996510031888	TOP CABINET	1
△ 13	996510021477	INDIA POWER CABLE 1500MM	1
15	996510032048	BACK PANEL	1
17	996510006463	PAD	4
2	996510031889	FRONT DOOR	1
8	996510031894	BOTTOM CABINET	1
ASSY1	996510031891	ASSY-FRONT DOOR	1
AV	996510001106	VIDEO CABLE 1500mm	1
CON503	996510011060	5PINCBLE TJC3-5Y/SCN-5P L=70MM	1
RC	996510022993	REMOTE CONTROL	1
XP2	996510001168	24PIN HS	1
XP3	996510021448	6PIN HS	1
XP4	996510004063	CABLE PH-5Y/PH-5Y L=130MM	1
XP601	996510022092	4P USB CBLE SHIELD pitch=2.0mm	1
XS301	996510031285	10PIN CABLE L=140MM 1&10	1

## SCREWS LIST:

No	12NC No.	Description	Q'ty
7	—	S/T SCREW B 2.6 X 8 BF	6
12	—	S/T SCREW B3 X 6 BF	9
14	—	S/T SCREW B 3 X 7 BF	5

## DVP3550KMX/78 SERVICE PARTLIST

## ELECTRICAL PARTLIST

No	12NC No.	Description	Q'ty
9	996510031296	ASSY-MAIN BD	1
16	996510031295	ASSY-PW BD	1
19	996510031284	ASSY-KU BD	1
20	996510031287	ASSY-FB BD	1
6	996510031286	ASSY-SW BD	1
10	996510031298	ASSY-LOADER	1
OPU	996510031294	SANYO DV38	1

## ASSY-MAIN BD COMPONENT PARTLIST

NO	12NC NO.	Description	Q'ty
D1	996510014439	SMD. SWITCHING DIODE LL4148	1
D20	996510009668	BAT54C	1
D926	996510020926	IC PESD5V0S1BA	1
D927	996510020926	IC PESD5V0S1BA	1
D928	996510020926	IC PESD5V0S1BA	1
D929	996510020926	IC PESD5V0S1BA	1
L101	996500014082	COIL CHOKE 10UH +/-10%	1
L102	996500014082	COIL CHOKE 10UH +/-10%	1
Q1	996510009669	SMD.TRANSISTOR MMBT3904LT1 NPN	1
Q103	996510009670	TRANSISTOR SMT 3CG9012M	1
Q104	996510009670	TRANSISTOR SMT 3CG9012M	1
Q2	996510009669	SMD.TRANSISTOR MMBT3904LT1 NPN	1
Q221	996510022279	PNP TRANSISTOR SOT-23PBSS5320T	1
Q361	996510009669	SMD.TRANSISTOR MMBT3904LT1 NPN	1
Q362	996510009669	SMD.TRANSISTOR MMBT3904LT1 NPN	1
Q543	996510009669	SMD.TRANSISTOR MMBT3904LT1 NPN	1
Q544	996510009670	TRANSISTOR SMT 3CG9012M	1
Q545	996510009670	TRANSISTOR SMT 3CG9012M	1
Q751	996510009671	PNP TRANSISTOR	1
Q752	996510009669	SMD.TRANSISTOR MMBT3904LT1 NPN	1
Q753	996510009671	PNP TRANSISTOR	1
Q761	996510009671	PNP TRANSISTOR	1
Q762	996510009671	PNP TRANSISTOR	1
U1	996510031297	IC MTK1389DXE/J MPEG	1
U10	996510011055	IC CD5888CB	1
U176	996510032434	IC 16M MX25L1605D DVP3550K/55	1
U186	996510031282	4*16M SDRAM EM638165TS -6T	1
U221	996510013349	HDMI USB ESD PYOTECTION IC	1
U361	996500032494	IC AS4558M	1
Y2	996510009675	27MCL20PF	1

## ASSY-PW BD COMPONENT PARTLIST

NO	12NC NO.	Description	Q'ty
D501	996510011047	DIODE IN4007	1
D502	996510011047	DIODE IN4007	1
D503	996510011047	DIODE IN4007	1
D504	996510011047	DIODE IN4007	1
D506	996500014043	DIODE FR102 (FAST RECOVERY)	1
D507	996510011047	DIODE IN4007	1
D508	996500014043	DIODE FR102 (FAST RECOVERY)	1
D509	996500027866	DIODE SR360 3A/60V	1
L501	996510009942	COIL WIDTH	1
L502	996500032509	COIL SL0811-6R8K2R4	1
T501	996510031291	TRANSFORMER EE-19\BCK-03EE19	1
U1	996510010953	IC TNY176PN	1
U502	996500027867	PHOTOCOUPLER PS2561L1-1-V(WF)	1
U503	996510010419	REG DE PRECISAO AJUSTAVEL	1

## ASSY-KU BD COMPONENT PARTLIST

NO	12NC NO.	Description	Q'ty
U200	996500032494	IC AS4558M	1

## ASSY-FB BD COMPONENT PARTLIST

NO	12NC NO.	Description	Q'ty
LED1	996510020917	J2808AG	1
REM301	996510020925	HM338-12 RECEIVER MOD H=12MM	1
U301	996510009665	IC ET6202 SOP-2	1

## MECHANICAL PARTLIST

No	12NC No.	Description	Q'ty
11	996510031301	TOP COVER	1
13	996510001175	POWER CORD	1
15	996510032714	BACK PANEL	1
17	996510006463	PAD	4
2	996510031283	FRONT DOOR	1
8	996510031292	BOTTOM CABINET	1
AVCABLE	996510001106	VIDEO CABLE 1500mm	1
Assy1	996510031288	ASSY-FRONT DOOR	1
CON503	996510021468	CONNECTOR (L3-5Y	1
MICROP	996510040129	MICROPHONE	1
PSOCKET	996510020885	POWER SOCKET transition	1
RC	996510031299	REMOTE CONTROL	1
XP1	996510029492	4PIN CABLE	1
XP2	996510001168	24PIN HS	1
XP3	996510021448	6PIN HS	1
XP4	996510004063	CABLE PH-5Y/PH-5Y L=130MM	1
XP601	996510020932	7PIN USB+KOK LINE PH-4Y/PH-3Y	1
XS301	996510031285	10PIN CABLE L=140MM 1&10	1

## SCREWS LIST:

N	12NC N .	Description	Q'ty
7	—	S/T SCREW B 2.6 X 8 BF	6
12	—	S/T SCREW B3 X 6 BF	9
14	—	S/T SCREW B 3 X 7 BF	5

**DVP3520KX/78 SERVICE PARTLIST****ELECTRICAL PARTLIST**

No	12NC No.	Description	Q'ty
9	996510031296	ASSY-MAIN BD	1
16	996510031295	ASSY-PW BD	1
19	996510032725	ASSY-KARAOKE USB BOARD	1
20	996510032723	ASSY-FRONT CONTROL BOARD	1
6	996510031364	ASSY-SWITCH BOARD	1
10	996510031298	ASSY-LOADER	1
OPU	996510031294	SANYO DV38	1

**ASSY-MAIN BD COMPONENT PARTLIST**

NO	12NC NO.	Description	Q'ty
D1	996510014439	SMD. SWITCHING DIODE LL4148	1
D20	996510009668	BAT54C	1
D926	996510020926	IC PESD5V0S1BA	1
D927	996510020926	IC PESD5V0S1BA	1
D928	996510020926	IC PESD5V0S1BA	1
D929	996510020926	IC PESD5V0S1BA	1
L101	996500014082	COIL CHOKE 10UH +/-10%	1
L102	996500014082	COIL CHOKE 10UH +/-10%	1
Q1	996510009669	SMD.TRANSISTOR MMBT3904LT1 NPN	1
Q103	996510009670	TRANSISTOR SMT 3CG9012M	1
Q104	996510009670	TRANSISTOR SMT 3CG9012M	1
Q2	996510009669	SMD.TRANSISTOR MMBT3904LT1 NPN	1
Q221	996510022279	PNP TRANSISTOR SOT-23PBSS5320T	1
Q361	996510009669	SMD.TRANSISTOR MMBT3904LT1 NPN	1
Q362	996510009669	SMD.TRANSISTOR MMBT3904LT1 NPN	1
Q543	996510009669	SMD.TRANSISTOR MMBT3904LT1 NPN	1
Q544	996510009670	TRANSISTOR SMT 3CG9012M	1
Q545	996510009670	TRANSISTOR SMT 3CG9012M	1
Q751	996510009671	PNP TRANSISTOR	1
Q752	996510009669	SMD.TRANSISTOR MMBT3904LT1 NPN	1
Q753	996510009671	PNP TRANSISTOR	1
Q761	996510009671	PNP TRANSISTOR	1
Q762	996510009671	PNP TRANSISTOR	1
U1	996510031297	IC MTK1389DXE/J MPEG	1
U10	996510011055	IC CD5888CB	1
U176	996510032434	IC 16M MX25L1605D DVP3550K/55	1
U186	996510031282	4*16M SDRAM EM638165TS -6T	1
U221	996510013349	HDMI USB ESD PYOTECTION IC	1
U361	996500032494	IC AS4558M	1
Y2	996510009675	27MCL20PF	1

**ASSY-PW BD COMPONENT PARTLIST**

NO	12NC NO.	Description	Q'ty
D501	996510011047	DIODE IN4007	1
D502	996510011047	DIODE IN4007	1
D503	996510011047	DIODE IN4007	1
D504	996510011047	DIODE IN4007	1
D506	996500014043	DIODE FR102 (FAST RECOVERY)	1
D507	996510011047	DIODE IN4007	1
D508	996500014043	DIODE FR102 (FAST RECOVERY)	1
D509	996500027866	DIODE SR360 3A/60V	1
L501	996510009942	COIL WIDTH	1
L502	996500032509	COIL SL0811-6R8K2R4	1
T501	996510031291	TRANSFORMER EE-19\BCK-03EE19	1
U1	996510010953	IC TNY176PN	1
U502	996500027867	PHOTOCOUPLER PS2561L1-1-V(WF)	1
U503	996510010419	REG DE PRECISAO AJUSTAVEL	1

**ASSY-OK+USB BD COMPONENT PARTLIST**

NO	12NC NO.	Description	Q'ty
U200	996500032494	IC AS4558M	1

**ASSY-FB BD COMPONENT PARTLIST**

NO	12NC NO.	Description	Q'ty
LED1	996510020917	J2808AG	1
REM301	996510020925	HM338-12 RECEIVER MOD H=12MM	1
U301	996510009665	IC ET6202 SOP-2	1

**MECHANICAL PARTLIST**

No	12NC No.	Description	Q'ty
11	996510031301	TOP COVER	1
13	996510021007	POWER CORD	1
15	996510032714	BACK PANEL	1
17	996510006463	PAD	4
2	996510032724	CD DOOR	1
8	996510031292	BOTTOM CABINET	1
AVCABLE	996510001106	VIDEO CABLE 1500mm	1
Assy1	996510032748	ASSY-FRONT PANEL	1
CON503	996510021468	CONNECTOR (L3-5Y	1
PSOCKET	996510020885	POWER SOCKET transition	1
RC	996510031299	REMOTE CONTROL	1
XP1	996510029492	4PIN CABLE	1
XP2	996510001168	24PIN HS	1
XP3	996510021448	6PIN HS	1
XP4	996510004063	CABLE PH-5Y/PH-5Y L=130MM	1
XP601	996510020932	7PIN USB+KOK LINE PH-4Y/PH-3Y	1
XS301	996510031285	10PIN CABLE L=140MM 1&10	1

**SCREWS LIST:**

No	12NC No.	Description	Q'ty
7	—	S/T SCREW B 2.6 X 8 BF	6
12	—	S/T SCREW B3 X 6 BF	9
14	—	S/T SCREW B 3 X 7 BF	5



**DVP3556K/93 SERVICE PARTLIST****ELECTRICAL PARTLIST**

No	12NC No.	Description	Q'ty
<b>9</b>	<b>996510034619</b>	<b>ASSY-MAIN BOARD DVP3556K/93</b>	<b>1</b>
<b>△ 16</b>	<b>996510034611</b>	<b>ASSY-POWER BOARD</b>	<b>1</b>
<b>6</b>	<b>996510031364</b>	<b>ASSY-SWITCH BOARD</b>	<b>1</b>
<b>20</b>	<b>996510032723</b>	<b>ASSY-FRONT CONTROL BOARD</b>	<b>1</b>
<b>19</b>	<b>996510034617</b>	<b>ASSY-OK+USB BOARD</b>	<b>1</b>
<b>10</b>	<b>996510029491</b>	<b>LOADER</b>	<b>1</b>
OPU	996510021449	SANYO LOADER (DV38)	1

**ASSY-MAIN BD COMPONENT PARTLIST**

NO	12NC NO.	Description	Q'ty
D1	996510014439	SMD. SWITCHING DIODE LL4148	1
D20	996510009668	BAT54C	1
L101	996500014082	COIL CHOKE 10UH +/-10%	1
L102	996500014082	COIL CHOKE 10UH +/-10%	1
Q1	996510009669	SMD.TRANSISTOR MMBT3904LT1 NPN	1
Q103	996510009670	TRANSISTOR SMT 3CG9012M	1
Q104	996510009670	TRANSISTOR SMT 3CG9012M	1
Q2	996510009669	SMD.TRANSISTOR MMBT3904LT1 NPN	1
Q221	996510022279	PNP TRANSISTOR SOT-23PBSS5320T	1
Q361	996510009669	SMD.TRANSISTOR MMBT3904LT1 NPN	1
Q362	996510009669	SMD.TRANSISTOR MMBT3904LT1 NPN	1
Q363	996510009669	SMD.TRANSISTOR MMBT3904LT1 NPN	1
Q364	996510009669	SMD.TRANSISTOR MMBT3904LT1 NPN	1
Q365	996510009669	SMD.TRANSISTOR MMBT3904LT1 NPN	1
Q366	996510009669	SMD.TRANSISTOR MMBT3904LT1 NPN	1
Q543	996510009669	SMD.TRANSISTOR MMBT3904LT1 NPN	1
Q544	996510009670	TRANSISTOR SMT 3CG9012M	1
Q545	996510009670	TRANSISTOR SMT 3CG9012M	1
Q751	996510009671	PNP TRANSISTOR	1
Q752	996510009669	SMD.TRANSISTOR MMBT3904LT1 NPN	1
Q753	996510009671	PNP TRANSISTOR	1
Q761	996510009671	PNP TRANSISTOR	1
Q762	996510009671	PNP TRANSISTOR	1
U1	996510034615	IC MTK1389FXE/J DECODE	1
U10	996510009674	IC AM5888IC	1
U176	996510034616	IC 16M SPI FLASH DVP3556K/93	1
U186	996510021455	64M SDRAM -6NS TSP54	1
U221	996510013349	HDMI USB ESD PYOTECTION IC	1
U361	996500032494	IC AS4558M	1
U362	996500032494	IC AS4558M	1
U363	996500032494	IC AS4558M	1
U926	996510021013	IC PESD5VL4UG	1
Y2	996510009675	27MCL20PF	1

**ASSY-POWER BD COMPONENT PARTLIST**

NO	12NC NO.	Description	Q'ty
D501	996510011047	DIODE IN4007	1
D502	996510011047	DIODE IN4007	1
D503	996510011047	DIODE IN4007	1
D504	996510011047	DIODE IN4007	1
D506	996500014043	DIODE FR102 (FAST RECOVERY)	1
D507	996510011047	DIODE IN4007	1
D508	996500014043	DIODE FR102 (FAST RECOVERY)	1
D509	996500027866	DIODE SR360 3A/60V	1
L501	996510009942	COIL WIDTH	1
L502	996500032509	COIL SL0811-6R8K2R4	1
<b>△ T501</b>	<b>996510031291</b>	<b>TRANSFORMER EE-19\BCK-03EE19</b>	<b>1</b>
U1	996510010953	IC TNY176PN	1
U502	996500027867	PHOTOCOUPLER PS2561L1-1-V(WF)	1
U503	996510010419	REG DE PRECISAO AJUSTAVEL	1

**ASSY-KU BD COMPONENT PARTLIST**

NO	12NC NO.	Description	Q'ty
U200	996500032494	IC AS4558M	1

**ASSY-FRONT CONTROL BD COMPONENT PARTLIST**

NO	12NC NO.	Description	Q'ty
LED1	996510020917	J2808AG	1
REM301	996510020925	HM338-12 RECEIVER MOD H=12MM	1
U301	996510009665	IC ET6202 SOP-2	1

**MECHANICAL PARTLIST**

No	12NC No.	Description	Q'ty
<b>△ 11</b>	<b>996510034618</b>	<b>TOP CABINET</b>	<b>1</b>
<b>△ 13</b>	<b>996510021454</b>	<b>3C PLUG POWER CORD</b>	<b>1</b>
15	996510034634	REAR PANEL	1
17	996510006463	PAD	4
2	996510034612	FRONT DOOR	1
8	996510031894	BOTTOM CABINET	1
ABAG	996510018311	ACCESSORY BAG	1
ASSY1	996510034633	FRONT PANEL ASSY	1
AV	996510001106	VIDEO CABLE 1500mm	1
DBOX	996510034613	DISPLAY BOX	1
LBUFFRE	996510031356	LEFT PAPER PAD	1
PBAG	996510019879	POLY BAG	1
QSG	996510034614	QSG	1
RBUFFER	996510031349	RIGHT PAPER PAD	1
RC	996510031353	REMOTE CONTROL	1
SGUAE	996500033761	SERVICE GUARANTEE	1
SHOT	996500042132	SERVICE HOT LINE	1
WCARD	996510019880	Worldwideguarantcard	1
XP2	996510001168	24PIN HS	1
XP3	996510021448	6PIN HS	1
XP4	996510004063	CABLE PH-5Y/PH-5Y L=130MM	1

**SCREWS LIST:**

No	12NC No.	Description	Q'ty
7	—	S/T SCREW B 2.6 X 8 BF	6
12	—	S/T SCREW B3 X 6 BF	9
14	—	S/T SCREW B 3 X 7 BF	5

## REVISION LIST

### Version 1.0

- \* Initial release for DVP3550K/55

### Version 1.1

- \* Adding DVP3550K/93

### Version 1.2

- \* Adding DVP3556(X)/94, DVP3520KX/78, DVP3550KX/77, DVP3550KMX/78, DVP3550K/96

### Version 1.3

- \* Adding DVP3556K/93

### Version 1.4

- \* Adding MICROPHONE (12 NC 996510040129) for DVP3550KMX/78